



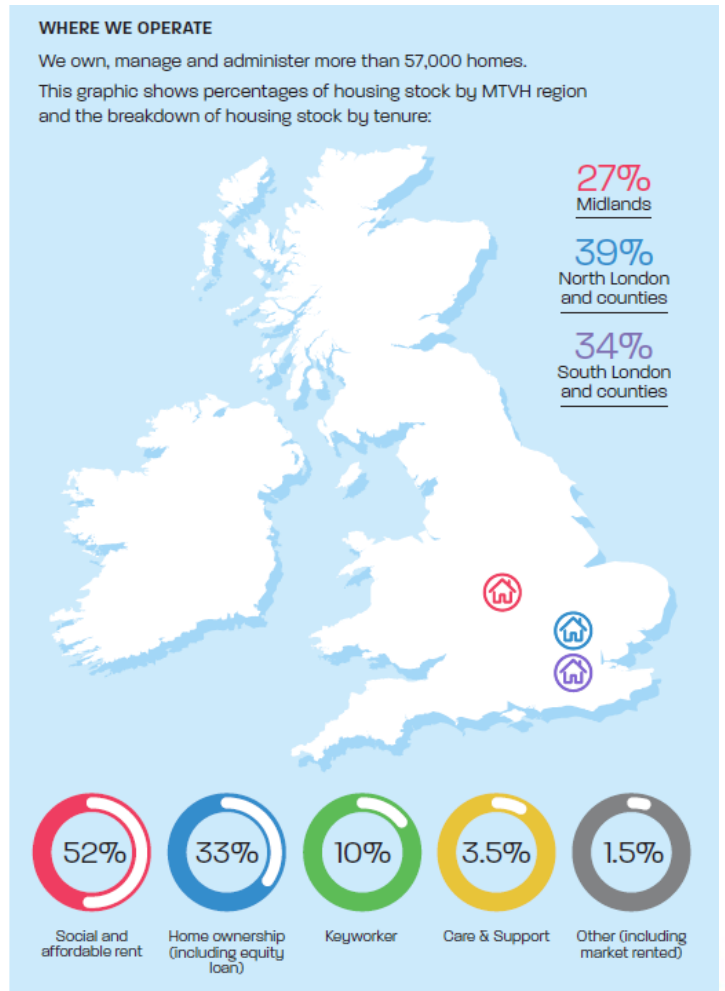
Metropolitan  
Thames Valley

## People Powered Living

**Geeta Nanda OBE**  
**CEO MTVH**  
**Former Chair, G15**

MTVH is one of the UK's leading providers of affordable housing and care and support services.

Our vision is that everyone should have a home and the opportunity to live well.





# What is the G15?

- The group of London's leading (largest) housing associations
- 11 members
- 770,000 homes under management
- Homes to 1 in 10 Londoners
- Employ over 23,000 people
- Built 10,605 new homes last year - 85% affordable
- Invest £1bn in existing homes
- £44m of financial gains for residents



## Challenges - Homelessness Crisis

- 166,000 homeless Londoners live in temporary accommodation
- 81,000 children
- 1 child in every class
- B&B accommodation is 107.2% higher than 12 months ago
- £52m spent every month on temporary accommodation



# Challenging Times for Housing Associations



# Opportunities – Shared Ownership

£425k property	Private Sale	S/O
Deposit	£42,500	£10,625
Income	£98,000	£60,600
Mortgage costs/total cost	£2,443	£1,454



SO Resi is rated  
**Excellent**

Based on 632 reviews



★ Trustpilot

SO Resi

Premier House, 52 London Rd, Twickenham

4.6 ★★★★★ 179 reviews

People often mention

AI property 54 team 51 questions 48 sales 42 +6





West Hendon



Brunel Street Works



Clapham Park



*The world's biggest eco-city in development, Tianjin Eco-city will be around half the size of Manhattan.  
Image by: Sino-Singapore Tianjin Eco-city Development and Investment.*







Metropolitan  
Thames Valley

**Thank you,  
Any  
questions?**