

**COMING SOON**

---

# FUTURE HOMES HUB

Delivering on the sector-wide climate and environment plan for high quality homes and places.

# Aim of the hub

- Oversee implementation of the commitments and roadmap,
- Develop the methods and facilitate the collaboration needed to support firms across the sector to deliver on net zero and environmental goals in an effective, efficient and coherent way.
- Work in a way that understands the customer and commercial context in which firms of all sizes and types operate.

# Government specification for Hub

- ^ Financial contributions so far from MHCLG, Defra and Homes England
- ^ Support sector-wide delivery of the Future Homes Delivery Plan
- ^ Immediate priority support of Future Homes Standard
- ^ Government support is for:
  - SMEs- insight, engagement, outreach
  - Supply chains
  - Nature, water, resilience, air quality, resources portfolio
- ^ Need to account specifically for Government spend

# Core functions of the hub

## ^ Develop the solutions

*Bringing together the right people, to answer the right questions and the right time, and sharing across the sector.*

## ^ Facilitate sector-wide collaboration with 'delivery partners' to overcome barriers

*Supply chain, skills, finance, infrastructure, local government and government.*

## ^ Share learning and experience across the sector

*Facilitating day to day sharing between companies including from tests and demonstrators.*

## ^ Develop consistent set of metrics to track delivery

*Framework of metrics to track delivery plan and simplify performance evaluation especially for ESG.*

# Delivery roadmap in each domain

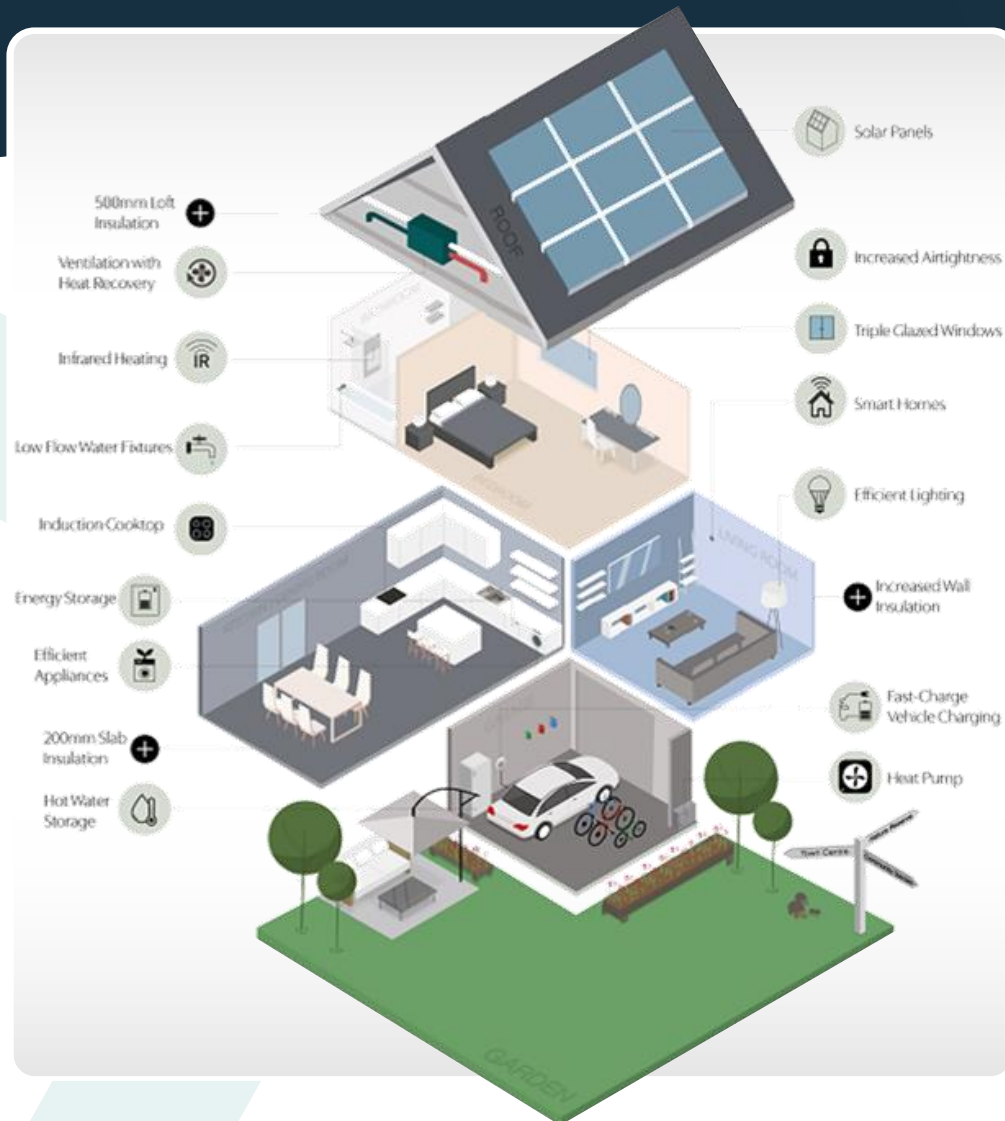
|  | 2021  | 2022 | 2023  | 2024 | 2025 | 2030  | 2040 | 2050 |
|--|---|------|---|------|------|---|------|------|
| <b>Government asks and actions</b>     |   |      | FHS: 1  |      |      | Full Future Homes Standard.   |      |      |
|  |   |      | Environment Bill Targets.   |      |      | No petrol/diesel cars.  |      |      |
|  | Work together on the full set of standards alongside the Future Homes Standard to ensure coherence across the issues including: to incorporate water efficiency, air quality, overheating, design for sustainable living. |      | SAP update so industry knows parameters.  |      |      | Review and update SAP.  |      |      |
| <b>Systematic approach</b>             |   |      | Develop sector-wide performance metrics and monitoring and communications approach, including as feedback loop to better reflect actual performance. (Horizontal across the four domains).  |      |      |   |      |      |
|  |   |      | Combined approach to achieve 2021 and 2025 in all areas, by strategically reviewing process changes and design types: Innovation and design > technical specification > testing new designs > scale exemplars country-wide > post-occupancy evaluation > re-designing standards home types.     |      |      |   |      |      |
|  |   |      | Work at scale with supply chain, skills and training providers, infrastructure providers, finance, certifying bodies.   |      |      |   |      |      |
|  |   |      | Develop online and offline support, outreach and training, tailored to support smaller developers.  |      |      |   |      |      |
|  |   |      | Take a customer lens throughout. Actively engage the customer to increase appetite for homes built to new standards. Develop home user guide templates and content.   |      |      |   |      |      |
| <b>Zero carbon ready</b>               |   |      | <ul style="list-style-type: none"> <li>Fabric</li> <li>Advanced technologies (e.g. MVHR, water heat recovery, ASHPs, GSHIPs, Pvs)</li> <li>Infrastructure and switch off fossil fuels</li> <li>Demand-side management (e.g. smart controls, batteries and energy aggregation)</li> </ul>        |      |      | Zero carbon ready homes.  |      |      |
|  |   |      |   |      |      | High fabric efficiency – kWh/m2/yr metric.  |      |      |
| <b>Healthy and comfortable</b>         |   |      | Ensure overheating is mitigated whilst increasing airtightness.   |      |      | Target levels to be set for overheating, air quality, sound, space and accessibility, safety and daylighting.     |      |      |
| <b>Water efficiency</b>                |   |      | Work with government to develop a roadmap in 2022 to achieve greater water efficiency in new development, including exploring the role for a fittings approach, for new technologies and innovative water systems and the potential for future targets for reducing water use in 2025 and 2030. |      |      | Potential water reduction targets for 2025 and 2030.  |      |      |
| <b>Designed for sustainable living</b> |   |      | Longer-term design measures to allow home users to live sustainably reflecting changing needs of occupants and the community.   |      |      | Incorporate zero emission vehicle readiness and other sustainable lifestyle enabling technologies as appropriate. |      |      |

PERFORMANCE OF HOMES IN OPERATION

# Working method – focused on delivery outputs

- ^ Work chunked into timebound projects, depending on timescales and complexity of issue, managed by the appropriate “Head” with focused outputs (normally “How to..” guides for specifiers, builders, suppliers & consumers) and delivery dates
  - Project 1: Future Homes Standard, uplift and full standard
- ^ For each project there will typically be a Call for Evidence
- ^ The work will be guided by one or more expert groups
- ^ Work in a transparent way with outputs shared at key stages

# Project 1: Future Homes Standard



1

## Oversight group

SAP level design and specification of the uplift and full standard. Identifying enablers of successful delivery.

2

## Fabric, ventilation and overheating

3

## Heat pumps

4

## Direct electric

5

## Energy infrastructure (including PV, EV and batteries)

6

## Customer

# Next priorities for 2021/22

- ^ Embodied carbon
- ^ Biodiversity Net Gain
- ^ Water efficiency
  
- ^ Metrics
- ^ Commercialisation of green



# Wider organisation set-up

- ^ Establish 2021 funding and sustainable funding model
- ^ Establish company legal structure
- ^ Appoint board of directors
- ^ Organisational infrastructure provided by NHBC to allow the Hub team to focus on the job
- ^ Establish key communications channels to start communicating early
- ^ Launch

# Hub Board



Department for  
Business, Energy  
& Industrial Strategy



Ministry of Housing,  
Communities &  
Local Government



**defra**  
Department for Environment  
Food and Rural Affairs



Homes  
England



**HBF**  
HOME BUILDERS FEDERATION



**NHBC**

- **Supply chain**
- **Local Government**
- **SMEs**
- **Conservation sector**

[admin@futurehomes.org.uk](mailto:admin@futurehomes.org.uk)