

HBF National Conference:

Public Sector Planning Perspective.....

August 2024-September 2025

Grant Butterworth
Head of Planning Leicester
City Council
Sept 2025

Real World/Brave New World)

1. Team and People
2. Local Planning
3. Strategic Planning
4. Local Govt review
5. Devolution

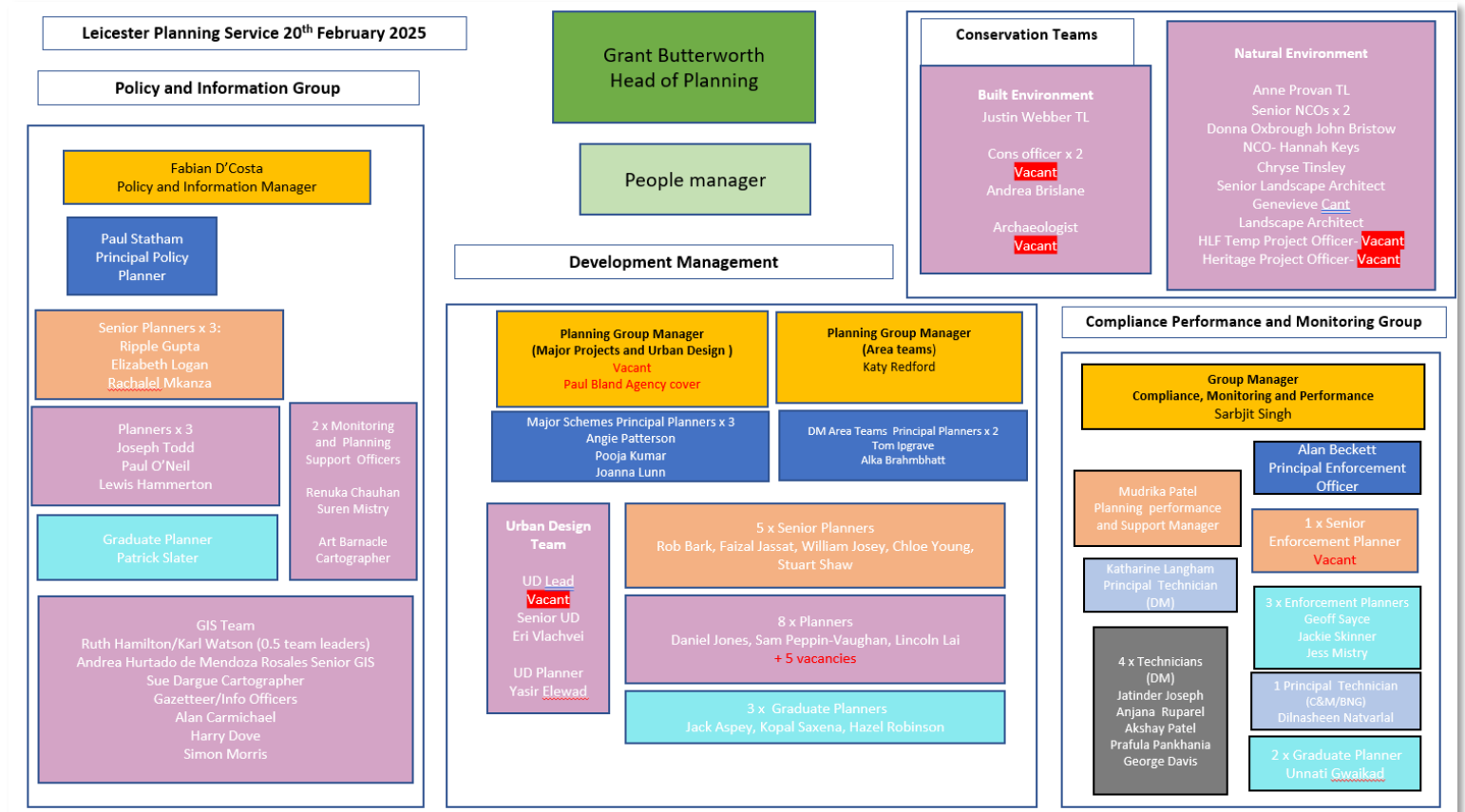
1. Real World: Team & People

- Lost 100's of years experience in last few years
- Experienced DM and other specialists:
 - Senior Planners and managers
 - 3 senior ecologists, Urban Design team leader, Archaeologist, Senior Conservation officer left over the same period
- WFH shifts London positioning for Cities like Leicester
- Reliance on great graduates- but need career pathway and progression opportunities



1. Team and People: Service Review

- Workforce Action Plan 4 years effort – focussed on staff **retention** and **recruitment**
- Main Planning phase concluded this summer, last job filled this September
- New Structure, Regrated Staff, new Technical JDs, New People manager
- Funded through fee uplift, increased pre-app charging, capital programme
- Now working on Urban Design, Built Heritage, Nature Conservation & GIS



2. Real World: Local Plan

Leicester Mercury

WAVE GOODBYE TO HOSPITAL, SCHOOL FIELDS, GOLF COURSES, ALLOTMENTS...

COUNCIL IDENTIFIES AREAS FOR HOUSING AS IT TRIES TO BALANCE LOSING LAND AND MEETING TARGETS

A SHORTLIST of areas in the city identified as potential sites for housing includes school playing fields, parks, play areas, golf courses, former allotments and part of the General Hospital site, writes Dan Martin.

Officials have earmarked 83 sites for housing developments, as well as the building of schools, industrial schemes and offices which they say will underpin their efforts to find the land needed to meet government targets.

City mayor Sir Peter Soulsby has admitted finding sites for the new draft local plan - a strategy for shaping how the city grows until 2036 - will prove controversial.

One critic, opposition councillor Nigel Porter, has called the current draft "a planned destruction" of the city's green spaces, but Sir Peter has insisted that the council is marking out carefully considered sites for development will serve to protect those open spaces that remain.

FULL STORY, PAGES 4 & 5

Who won coveted Comedian of Year?
Page 3

Mum's killer showed no mercy, says judge
Page 6

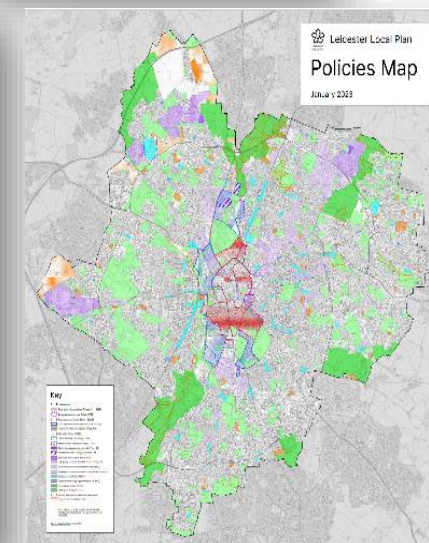
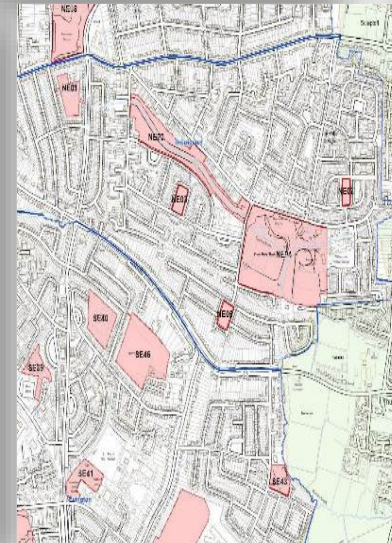
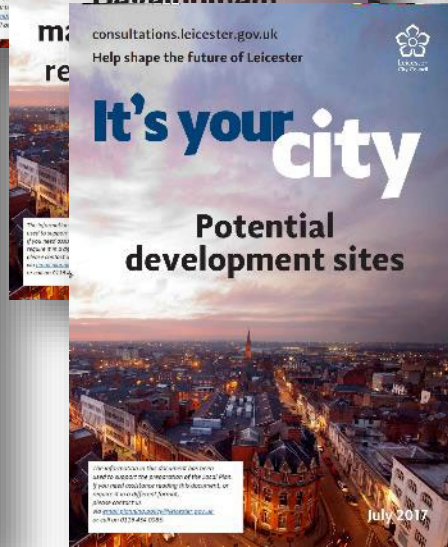
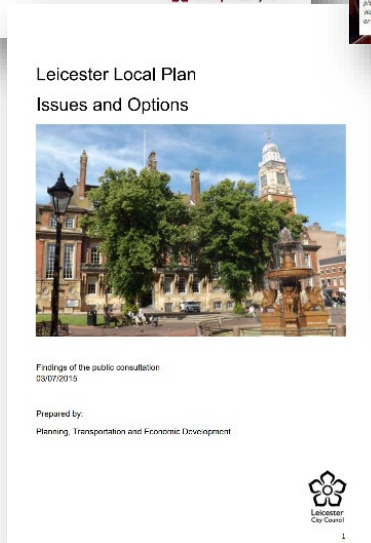
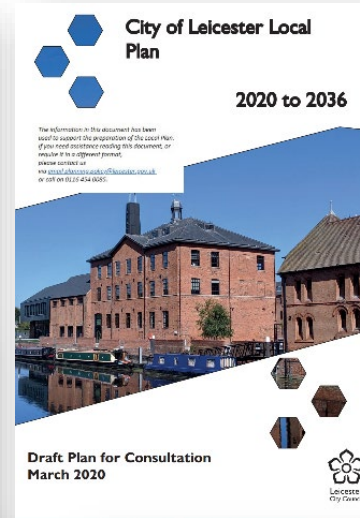
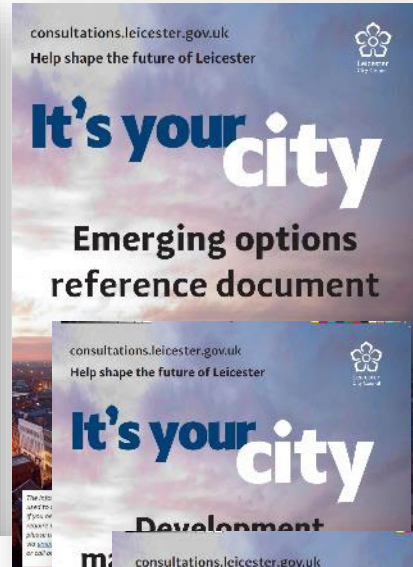
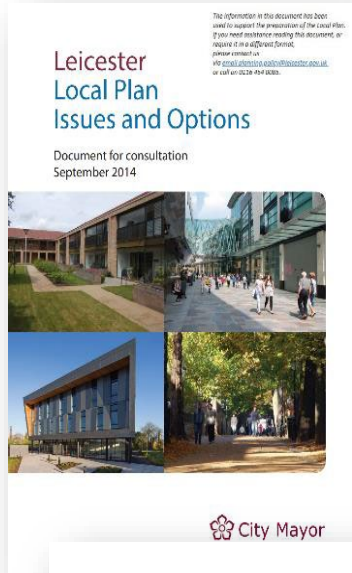
Rodgers: Squad now needs to refocus
Sport

HOSTEL FOR HOMELESS FAMILIES TO BE CLOSED BY COUNCIL PAGE 7



Four consultations over 10 years.....

- Issues and Options: 2014
- Emerging Options
- Preferred Options
- Reg 19 Publication Draft Plan
- Examination autumn 2024
- Consultation on Modifications- June/July 2025
- Adoption Autumn 2025??

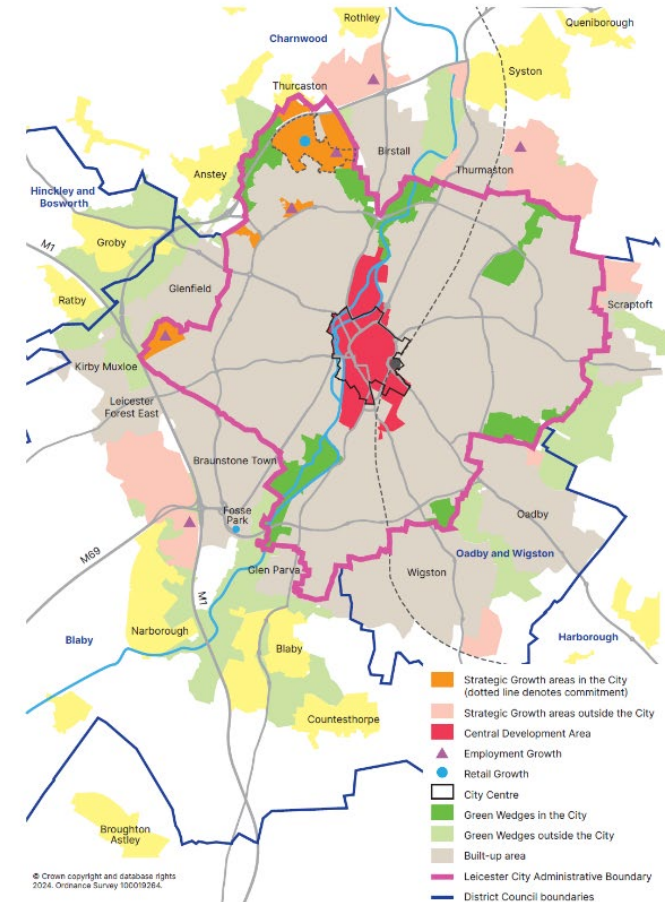


- 4 General Elections
- 7 Prime ministers
- 7 NPPFs
- Unmet Need
- 35% uplift in housing target
- More Unmet Need
- COVID
- Well Over £1m.....

Unmet Need

- Changing Policy context nationally huge challenge
- Only deals with c. half of objectively assessed housing need
- Supported by L&L Districts and County
- Plan period of under 12 years if adopted in 2025- COVID/+35%
-but has been found to likely be sound following Examination Sept-November 2024
- Immediate review upon adoption
- Awaiting Inspectors' letter following Modifications consultation responses

Diagram 2 with modifications.



Leicester Local Plan 2020-2036 Examination - Submission Documents and Evidence Base

Submission Documents	
REF	TITLE
SD1	Leicester Local Plan Submission Covering Letter
SD2	Leicester Local Plan 2020-2036 Submission (Regulation 19 publication) Plan (January 2022)
SD3	Leicester Local Plan Policies Map (January 2022)
SD4	Sustainability appraisal of the Reg. 19 Leicester Local Plan (September 2022)
SD4a	SA Appendix A: Detailed appraisal of alternatives (September 2022)
SD4b	SA Appendix B: Detailed appraisal of Local Plan sites (September 2022)
SD4c	SA Appendix C: Detailed appraisal of policies in the Local Plan (September 2022)
SD4d	SA Appendix C2: Detailed appraisal of policies in the Local Plan (September 2022)
SD4e	SA Appendix D: Detailed appraisal of Local Plan policies (September 2022)
SD4f	SA Appendix E: Recommended mitigation measures and their implementation in the Plan (September 2022)
SD5	Equality Impact Assessment 0.34a: Leicester Local Plan (2020-2036) (2022)
SD6	Habitats Regulations Appropriate Assessment Screening Report (September 2022)
Duty to Cooperate (Statements of Common Ground)	
REF	TITLE
SCG1	Leicester & Leicestershire Authorities - Statement of Common Ground relating to Housing and Employment Land Needs (June 2022) (Updated with Signatures Oct 24)
SCG2	Harborough District Council SCoG Update (July 2023)
SCG3a	Letter to Cllr Knowles HSC (August 2023)
SCG3b	Letter to Cllr Knowles HSC (September 2023)
SCG3c	2nd Leicestershire Local Plan Submission to the Leicestershire District Council Members (November 2020)
SCG3d	Leicestershire City Council Local Plan (2020-2036) - Submission to the Leicestershire District Council Members (November 2020)
SCG3e	Report to Council on Leicester and Leicestershire Statement of Common Ground relating to housing and employment land needs (2022) (September 2022)
SCG3f	Letter to Cllr Bray (August 2023)
SCG3g	Leicester & Leicestershire Authorities - Statement of Common Ground relating to Business, Manufacturing & Logistics (2022)
Topic Papers	
REF	TITLE
TP1	Leicester Local Plan 2020 to 2036 Climate Change Topic Paper (2022)
TP2	Leicester Local Plan 2020 to 2036 Employment Topic Paper (2022)
TP3	Leicester Local Plan 2020 to 2036 Green Wedge Topic Paper (2022)
TP4	Leicester Local Plan 2020 to 2036 Gypsy and Traveller Topic Paper (2023)
Evidence base documents	
Central Development Area	
REF	TITLE
EB/CD/1	Belgrave Gate Character Area (November 2022)
EB/CD/2	DAMU and L&L Character Area (November 2022)
EB/CD/3	Mansfield Street Character Area (November 2022)
EB/CD/4	New Walk Character Area (November 2022)
EB/CD/5	Old Town Character Area (November 2022)
EB/CD/6	Railway Station Character Area (November 2022)
EB/CD/7	St. George's Cultural Quarter Character Area (November 2022)
EB/CD/8	St. Margaret's Character Area (November 2022)
EB/CD/9	Wharf Street Character Area (November 2022)
EB/CD/10	Leicester Central Development Area Residential Capacity Study (2022)

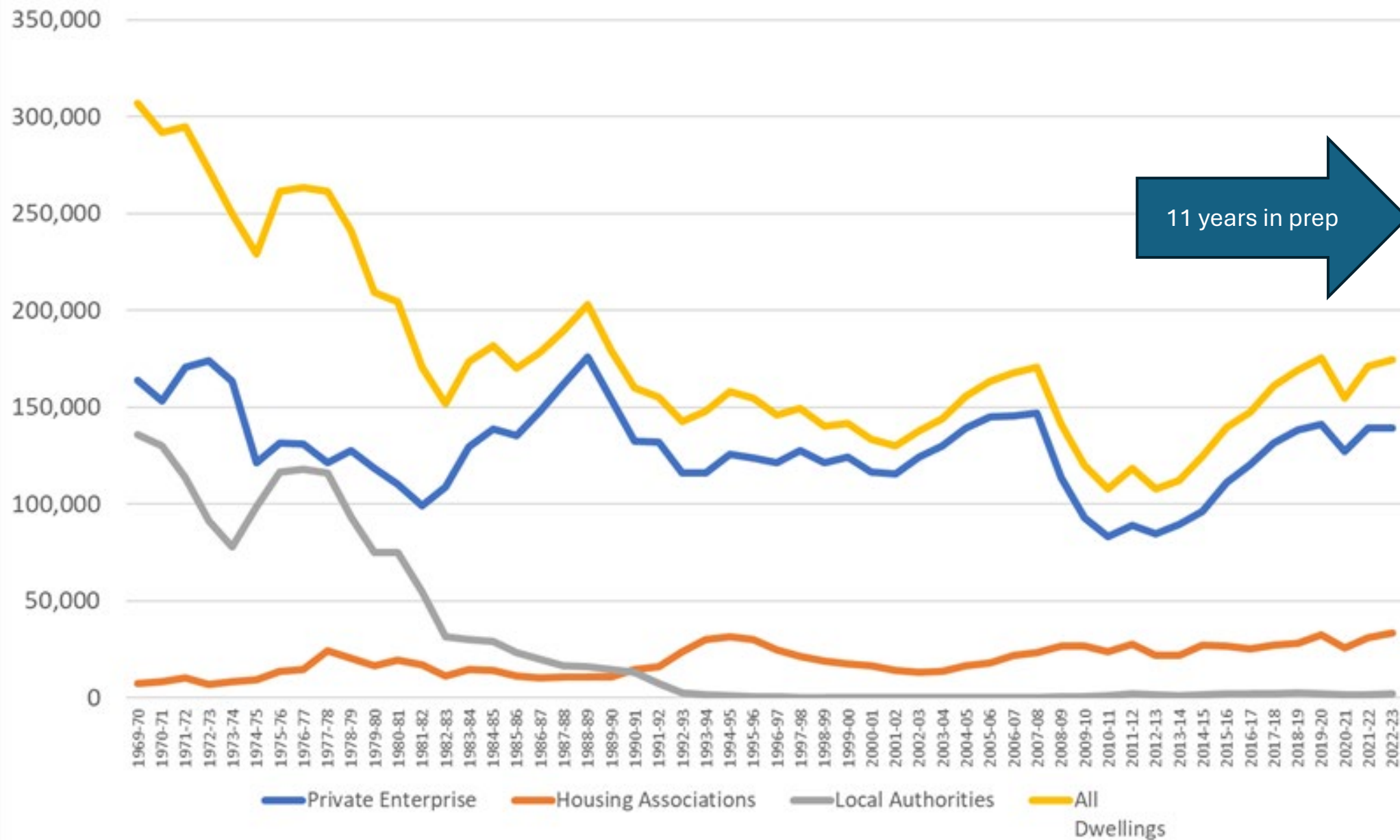
Climate Change and Flood Risk	
REF	TITLE
EB/CC/1	Energy and sustainable design and construction study (2022)
EB/CC/2	
EB/CC/2a	
EB/CC/2b	
EB/CC/2c	
EB/CC/2d	
EB/CC/2e	
EB/CC/2f	
EB/CC/2g	
EB/CC/2h	
EB/CC/2i-3	
EB/CC/2j-4-6	
EB/CC/2j-7-9	
EB/CC/2j-10-13	
EB/CC/2j-notes	
EB/CC/3	
EB/CC/3a	
Delivering Quality Design	
REF	TITLE
EB/QD/1/1	Tall Development in Leicester (2022) (1 of 3)
EB/QD/1/2	Tall Development in Leicester (2022) (2 of 3)
EB/QD/1/3	Tall Development in Leicester (2022) (3 of 3)
EB/QD/1	
Natural Environment	
REF	TITLE
EB/NE/1	Green Infrastructure Strategy (2015-2025)
EB/NE/2	
Open Spaces, Sports and Recreation	
REF	TITLE
EB/OS/1	Green Wedge Review Joint Methodology (2011)
EB/OS/2	Green Wedge Review (2012)
EB/OS/2a	Green Wedge Review Addendum Report (2020)
EB/OS/3	Open Space, Sport, and Recreation Study (2017)
EB/OS/4	Playing Pitch Strategy Assessment Report (2017)
EB/OS/4a	Playing Pitch Strategy Action Plan (2017)
EB/OS/4b	Playing Pitch Strategy Position Statement (2022)
EB/OS/5	
Town Centre and Retail	
REF	TITLE
EB/TC/1	Retail and Leisure Study (2021)
EB/HO/1	LRS Appendix 1 - Study Area Plan
EB/HO/1	LRS Appendix 2 - Household Survey Results
EB/HO/2	LRS Appendix 3 - In-Street Survey Results
EB/HO/2	LRS Appendix 4 - Leicester City Centre
EB/HO/2	LRS Appendix 5 - Town and District Centre Health Checks
EB/HO/2	LRS Appendix 6a - Local Centres
EB/HO/3	LRS Appendix 6b - Local Centres Healthcheck maps
EB/HO/4	LRS Appendix 7 - Neighbourhood Parade Matrix
EB/HO/5	LRS Appendix 8 - Quantitative Capacity Assessment
EB/TC/1a	
EB/TC/1b	
EB/TC/1c	
EB/TC/1d	
EB/TC/1e	
EB/TC/1f	
EB/TC/1g	
EB/TC/1h	
EB/TC/1i	
Transportation	
REF	TITLE
EB/TR/1	Pan Regional Transport Model: Leicester City Local Plan Base Year Model Review (2022)
EB/TR/1a	Pan Regional Transport Model v2: Leicester City Local Plan: Interim Forecasting Report (2022)
EB/TR/2	Transport Infrastructure Assessment 2020 to 2036: Addendum: Updating of evidence for Regulation 19 (submission plan) (2022)

Examination Stage: 24 months and counting since submission

- Local Plan submitted September 2023
- Inspectors' initial Questions December 2023
- Matters Issues and Questions: May 2024
- Hearing sessions July delayed due to General Election
- MIQ's for hearings published August 2024
- Hearings Weeks 1-3: October 2024
- Weeks 4 & 5: November 2024
- Hearings closed 21st November 2024
- Inspectors' Letter: January 2025
- Modifications Agreed with Inspectors: May 2025
- Modifications Consultation: June/July 2025
- Inspectors Report: ??



Housing Completions by Tenure (England)



2. Brave New World: Local Planning

- Abolition of +35%
- Abolition of beauty nonsense
- New Grey Belt provisions
- New Brownfield provisions
- New System:
 - Legislation introduced by Levelling Up Act
 - 30 Month Local Plans
 - New National Development Management Policies
- Govt to 'commence' this year?



2. Brave New World: New Numbers for L&L

Local Authority Name	Current Method	Proposed Method	Statement of Common Ground Agreed Position including City Unmet Need
Blaby	329	559	↑ 687
Charnwood	1,115	1,012	↓ 1,189
Harborough	510	706	↑ 657
Hinckley and Bosworth	432	689	↑ 659
Leicester	2,435	1,690	↓ 1,295
North West Leicestershire	357	621	↑ 686
Oadby and Wigston	198	389	↑ 240
Total	5,245	5,666	↑ 5,413

2. Real World: Local Planning today.....

- L&L Partnership still working hard together (despite LGR)
- Four councils pushing local plans under Nov 23 NPPF
 - Charnwood
 - City
 - Melton
 - Harborough
- Four Councils pushing local plans under Nov 24 NPPF aiming to beat Dec 2026 deadline
 - Blaby
 - North West Leicestershire
 - Oadby & Wigston
 - Hinckley and Bosworth
- New post 2036 SoCG, HENA & Distribution Agreement based on new Standard Method currently being worked up
- Transitional provisions are unclear and very problematic- could get worse?

3. Strategic Planning

3. Brave New World: Strategic Planning

- New statutory comprehensive strategic planning approach
- But: SDS Geography uncertain
 - Doesn't have to follow LGR geography (but should align with MCCA if possible)
 - MHCLG keen to get Councils looking at SDS's.....
interplay with current Local Plan efforts, new Local Plan system and LGR?
 - Uncertainties re Rutland (Leicestershire or Lincolnshire?) and Northamptonshire (???)
- Should these have been introduced before new Local Plan system?

A
B I L L
TO

Make provision about infrastructure; to make provision about town and country planning; to make provision for a scheme, administered by Natural England, for a nature restoration levy payable by developers; to make provision about development corporations; to make provision about the compulsory purchase of land; to make provision about environmental outcomes reports; and for connected purposes.

*Presented by Secretary Angela Rayner
supported by the Prime Minister,
the Chancellor of the Exchequer,
Secretary Steve Reed, Secretary Heidi Alexander,
Secretary Ed Miliband, Secretary Jo Stevens and
Secretary Ian Murray.*

Ordered, by The House of Commons, to be
Printed, 11th March 2025.

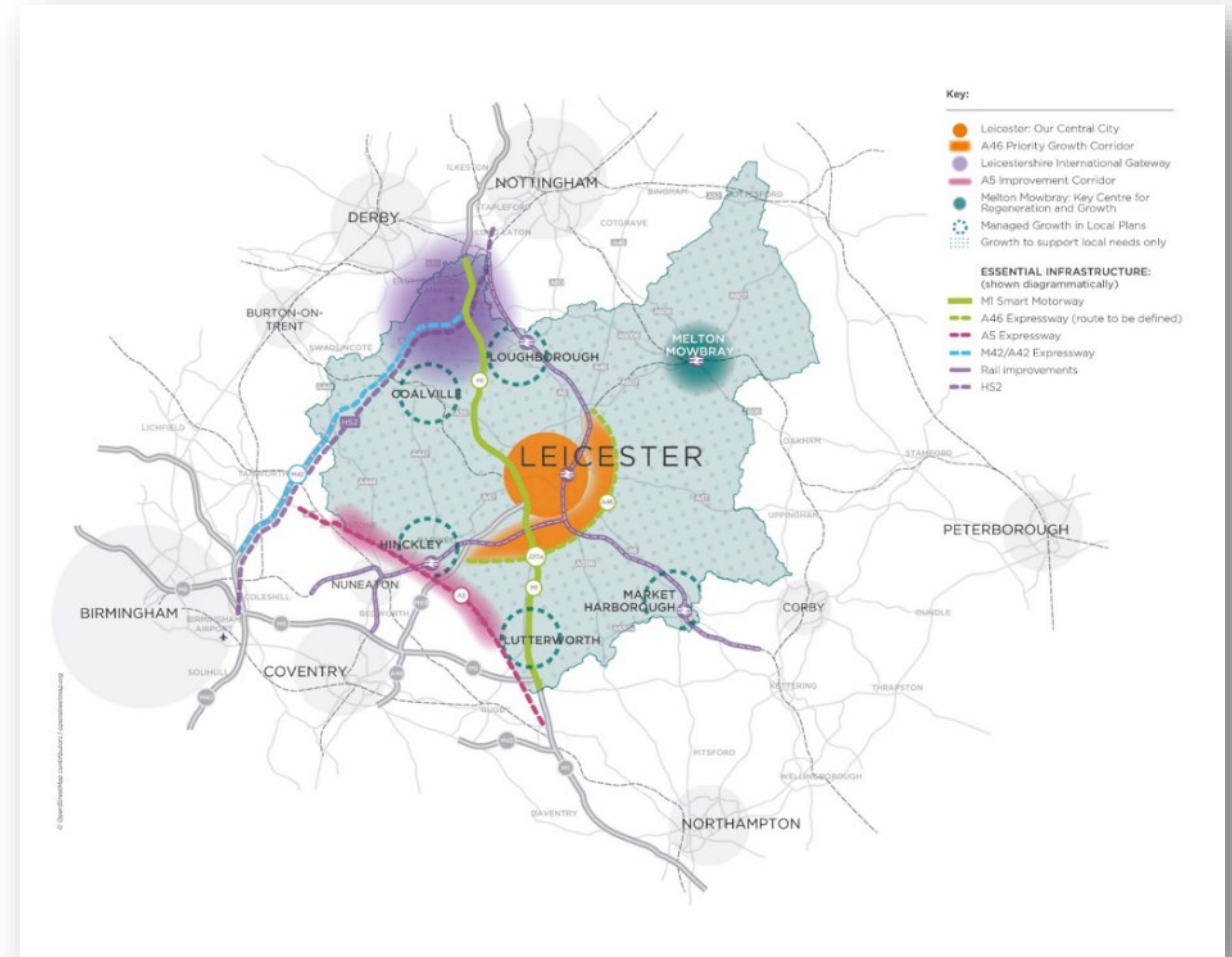
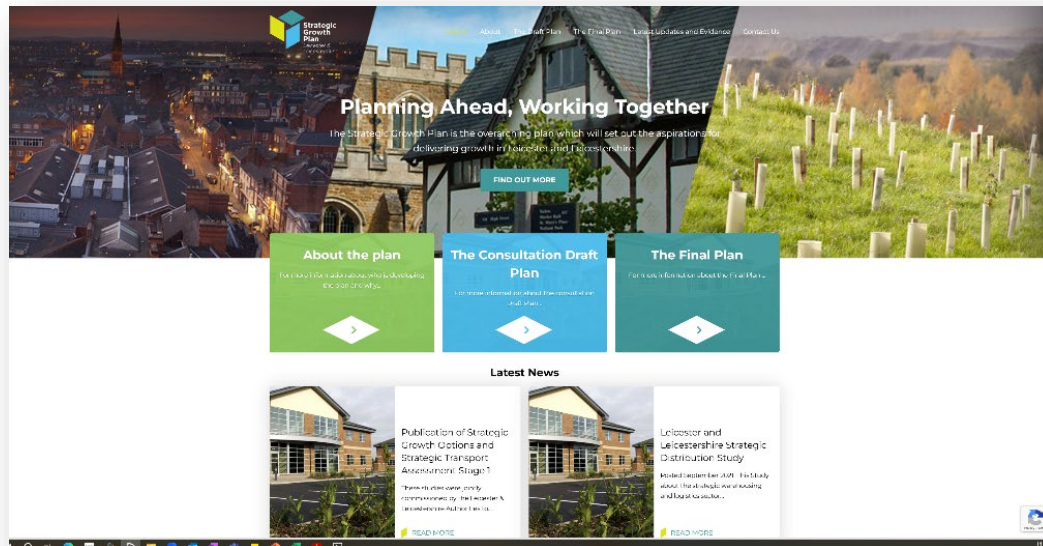
© Parliamentary copyright House of Commons 2025
*This publication may be reproduced under the terms of the Open Parliament Licence, which is published at
www.parliament.uk/site-information/copyright*

PUBLISHED BY THE AUTHORITY OF THE HOUSE OF COMMONS

3. Real World: Current Strategic Planning

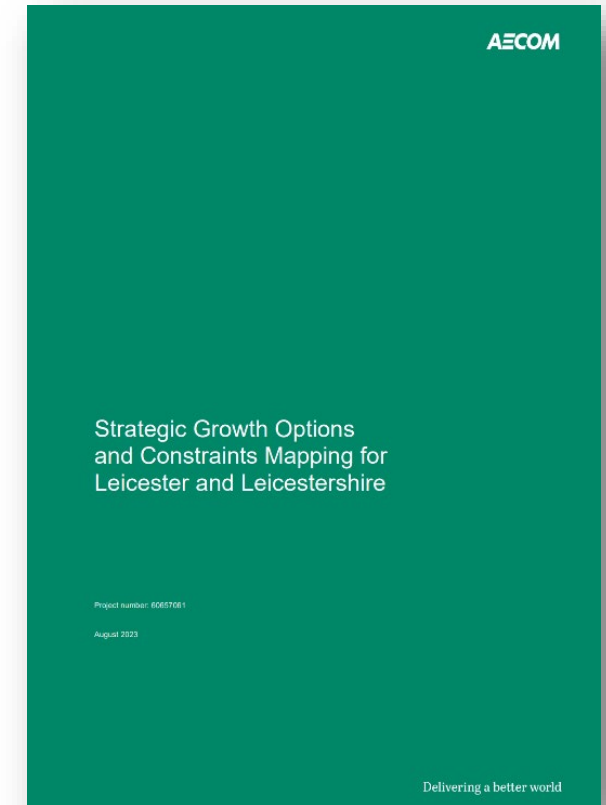
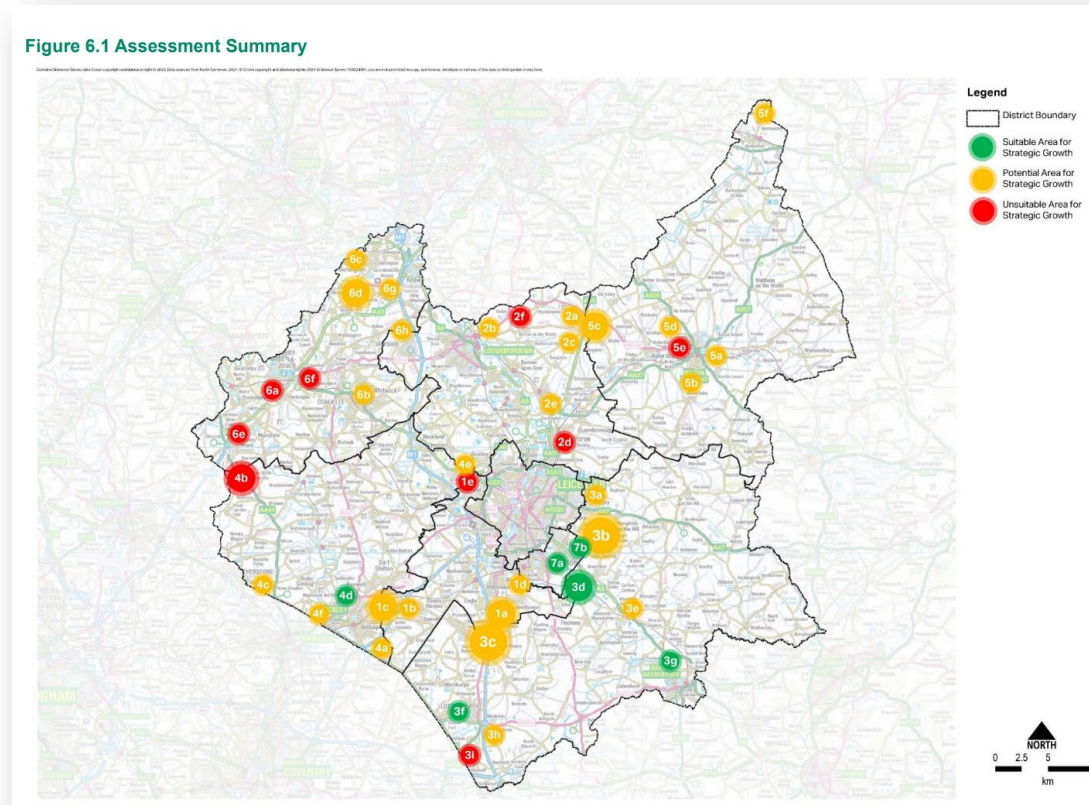
To 2050: L&L Strategic Growth Plan

Non-Statutory



Future Strategic Planning in Leicestershire

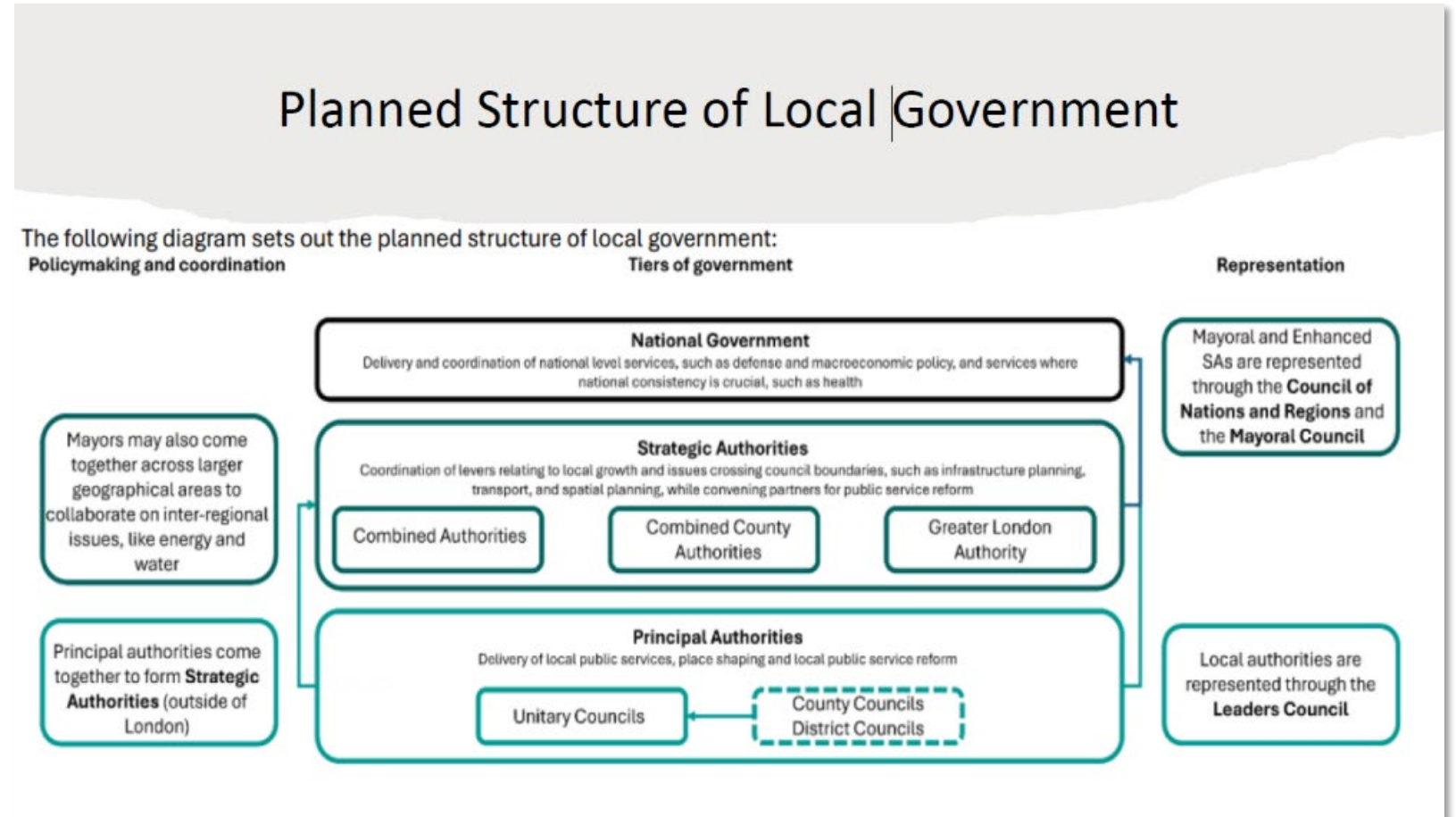
- Growth Options and transport studies published
- Future Spatial Development Strategy (based on Strategic Growth Plan Review)
- Post LGR task for Leicester, Leicestershire (and Rutland?)



4. Local Government Review

4. Brave New World: Local Government Review

- Comprehensive unitary coverage
- Potential for major savings?
- Pathway to devolution



Leicester City Council

Local Government Reorganisation

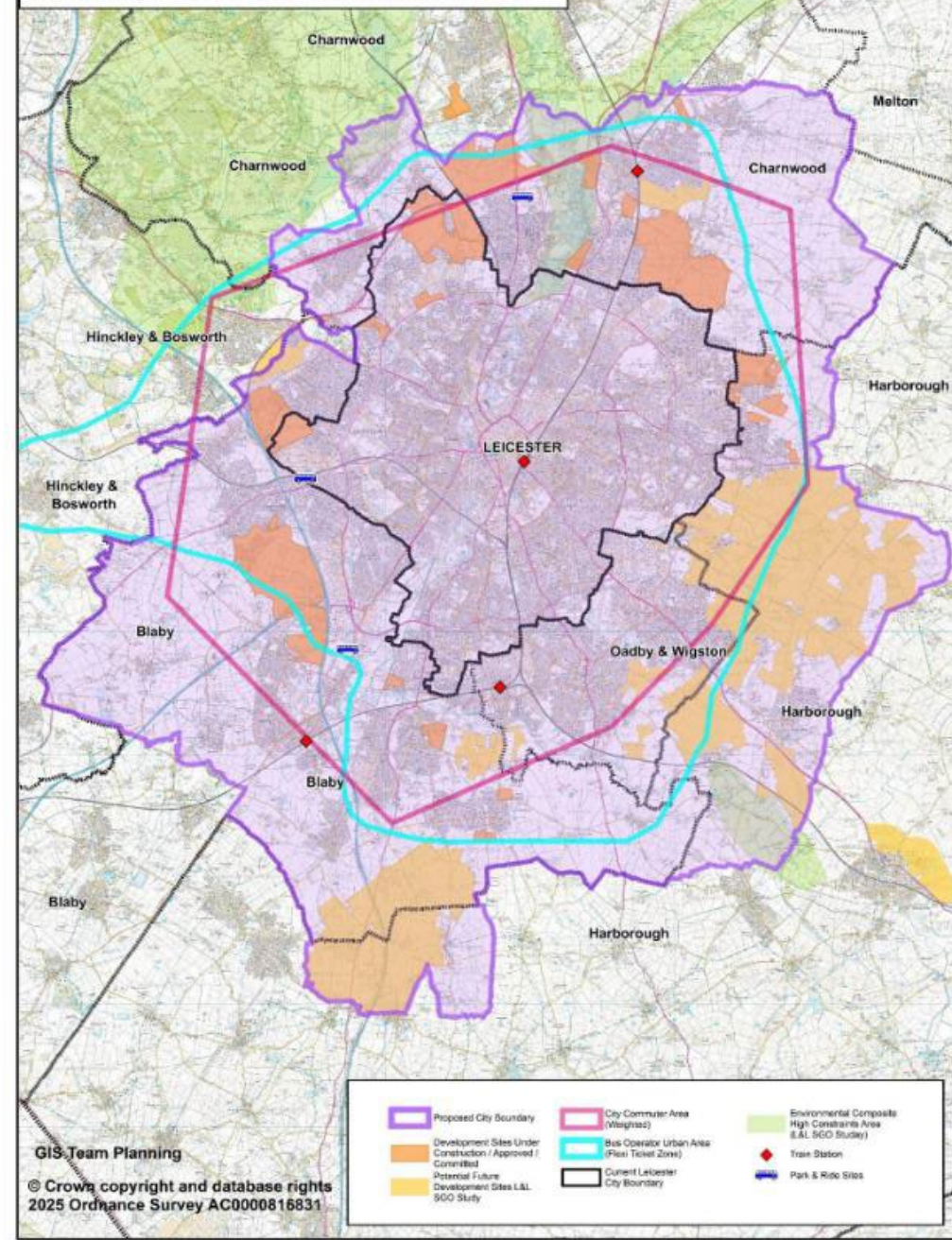
The case for change — interim submission



March 2025

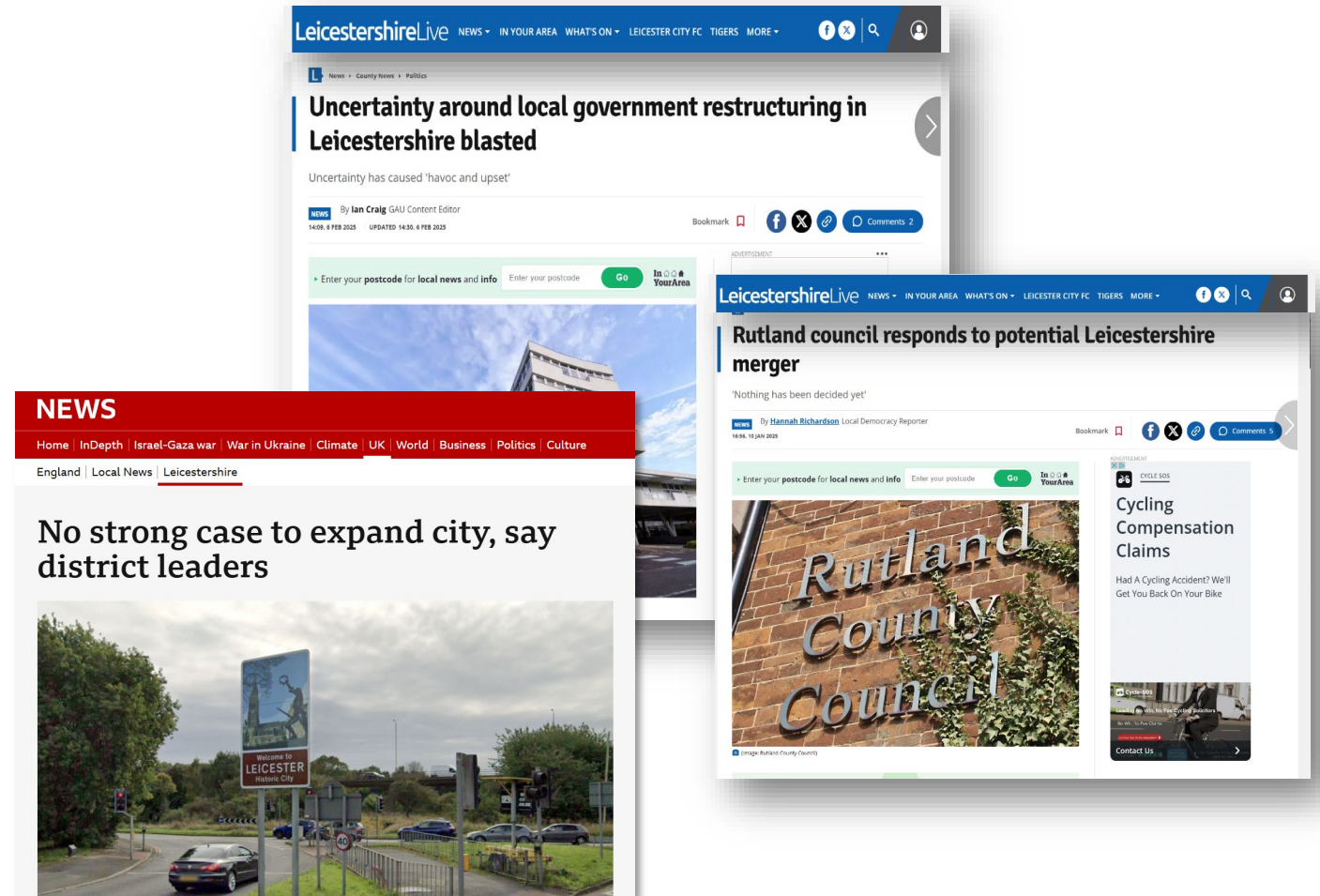


Draft interim plan of proposed city boundaries



4. Real World: LGR in L&L

- Politics at Play
- Next Steps:
 - End November – submit Bids
 - Consultation Spring 2026
 - Shadow councils 2027
 - New Councils 2028



5. Devolution

5. Brave New World: Devolution

- Mayors will own strategic Planning and convene/approve comprehensive SDS's
- Strategic & public transport
- Call in strategic applications
- Link with housing, regeneration, economic development



[Home](#) > [Regional and local government](#) > [Devolution](#)

Press release

Full steam ahead for Devolution Priority Programme

Six areas receive confirmation as priority areas for English devolution.

From: [Ministry of Housing, Communities and Local Government](#) and [Jim McMahon OBE MP](#)

Published 17 July 2025

Real World: Devolution in L&L

- In February all Councils supported L&L Devolution in principle ...
- Geography uncertain
- MCCA and new Unitary Governance will need to deal with challenging decisions:
 - Growth- strategic planning and strategic applications
 - Transport
 - Education
 - Waste
 - Energy
 - Unmet need (esp if City geography is not changed)
- Will mean end of Leicester City Mayoral role

Conclusions

- Positive scorecard for the Govt- pace and ambition
 -but transition means turbulence
 - Capacity and capabilities: local and national
 - Political uncertainties: national and local
 - Everchanging system will test resilience and resolve...
-
- Long term gains if we can all stay the course

Thank you

Grant.butterworth@leicester.gov.uk