

# Benefits of digital construction

Lee Mullin

Technical Specialist AEC





# 1982





2017

**Find Skilled  
Labour**

**Poor  
Productivity**

**Secure  
Planning**

**Higher Client  
Expectations**

**Build More**

**Improve  
Cashflow**

**Ensure Quality  
& Performance**

**Futureproofing**

## FINANCIAL TIMES

### UK rush to build homes compromises quality

Buyers complain of exposed cables, faulty doors and windows, flooding and dodgy plumbing

## The Telegraph

**UK housebuilders warn  
labour shortage will hit  
delivery of homes**

## THE TIMES

**House builders could face land  
seizure**

# Trends – Driving Transformation



Offsite  
Construction



Under  
investment in  
Technology



Productivity & Skills  
Scarcity



Collaborative Project  
Teams



BIM Mandates  
(EIR 2017)





**Nottingham  
City Homes**

Creating homes and places where people want to live



**28%**

Cost reduction

**50%**

Reduction in  
contingency used

**1.87%**

Diff between 1st &  
2<sup>nd</sup> bidder



**15%**  
Reduced Costs

**50%**  
Reduced Schedule

**1**  
Coordinated  
Model

# PLANNING



Land Acquisition



Site Design & Optimisation



Consultation & Permissions

# DESIGN



Concept Unit Design



Analysis



Detailed Unit Design & Customisations



Documentation

# SALES & MARKETING



Pricing



Customer Personalisation



Customer Sales Experience



Schedule, Progress and Cost

# BUILD



Pre-fabrication and Assembly



Quality, Verification & Performance



Field Execution & Construction Admin

# OPERATIONS



Handover & Completion



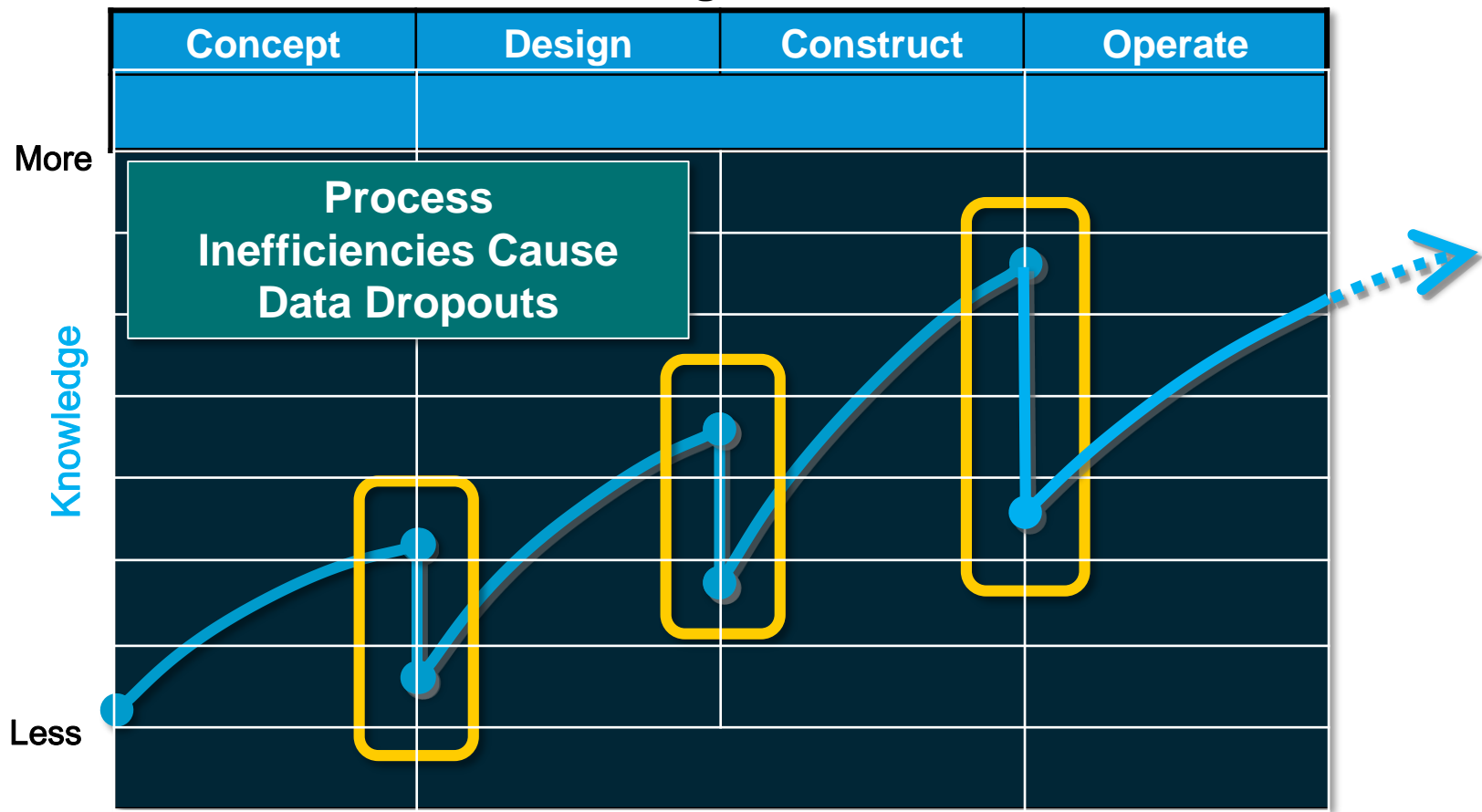
Operations & Maintenance



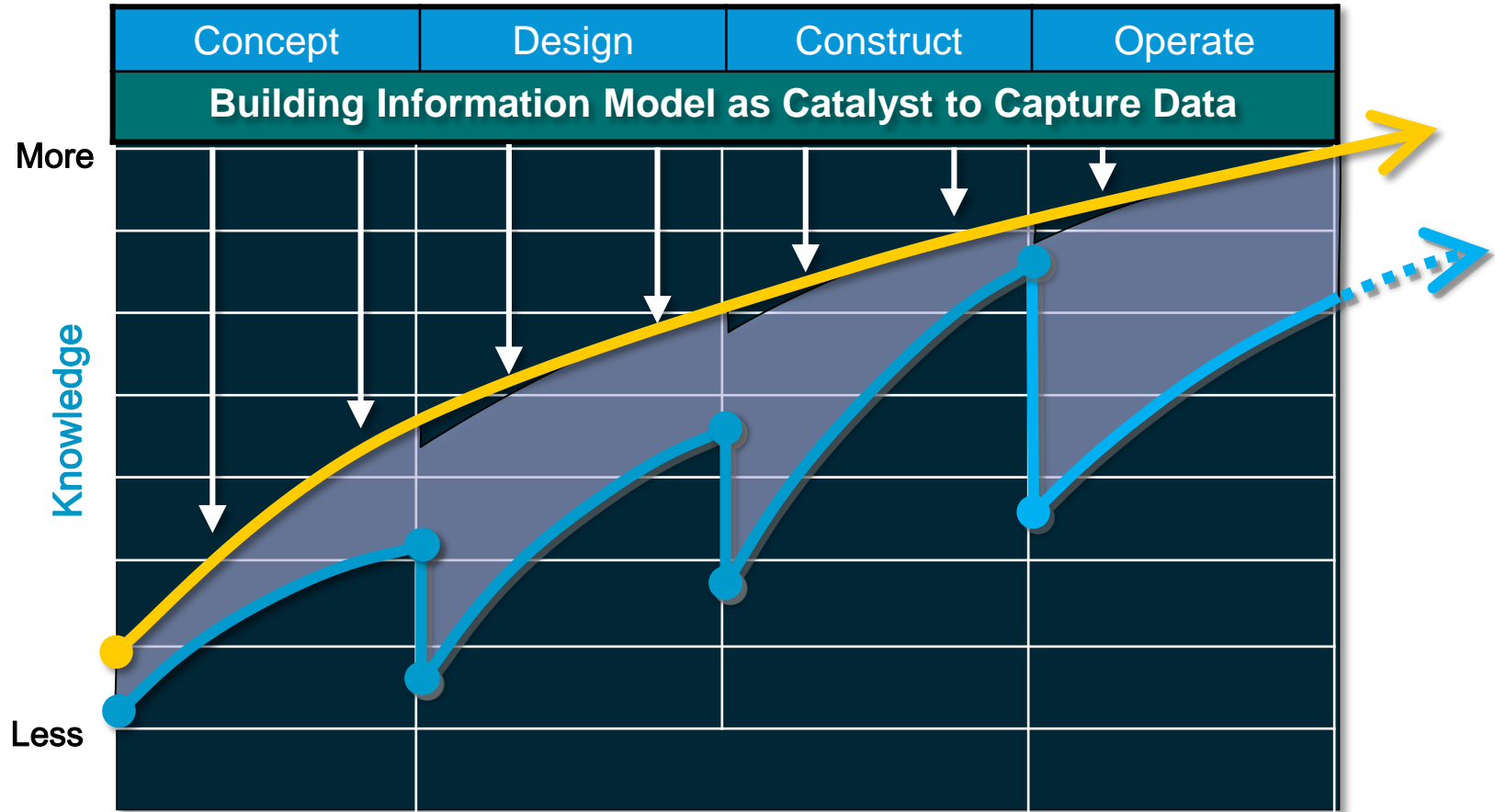
Customer Service

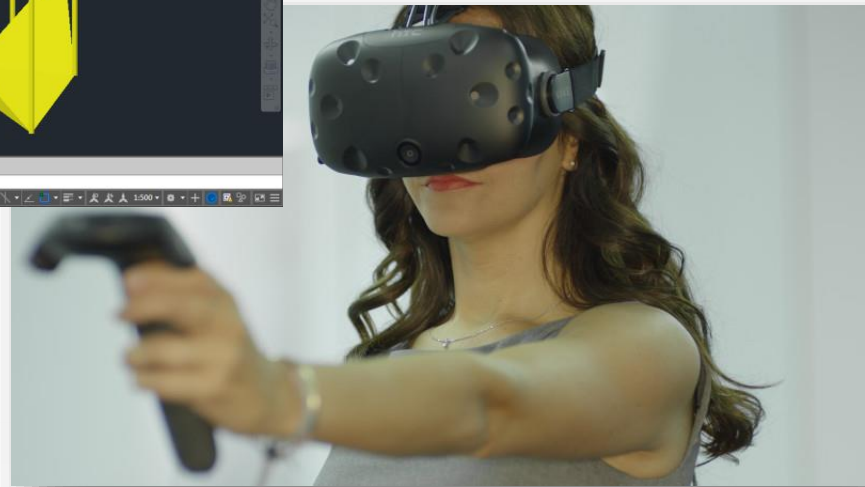
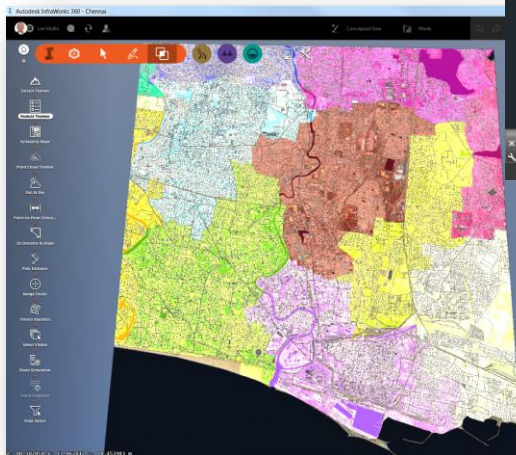
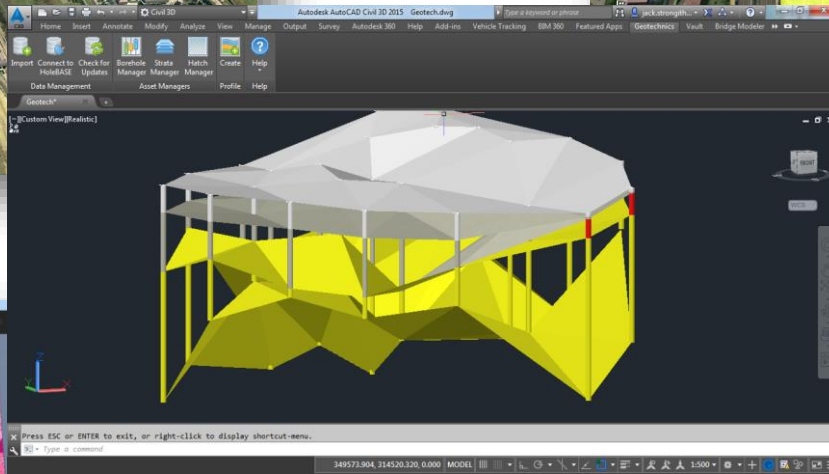


# Knowledge Sources



# Knowledge Sources



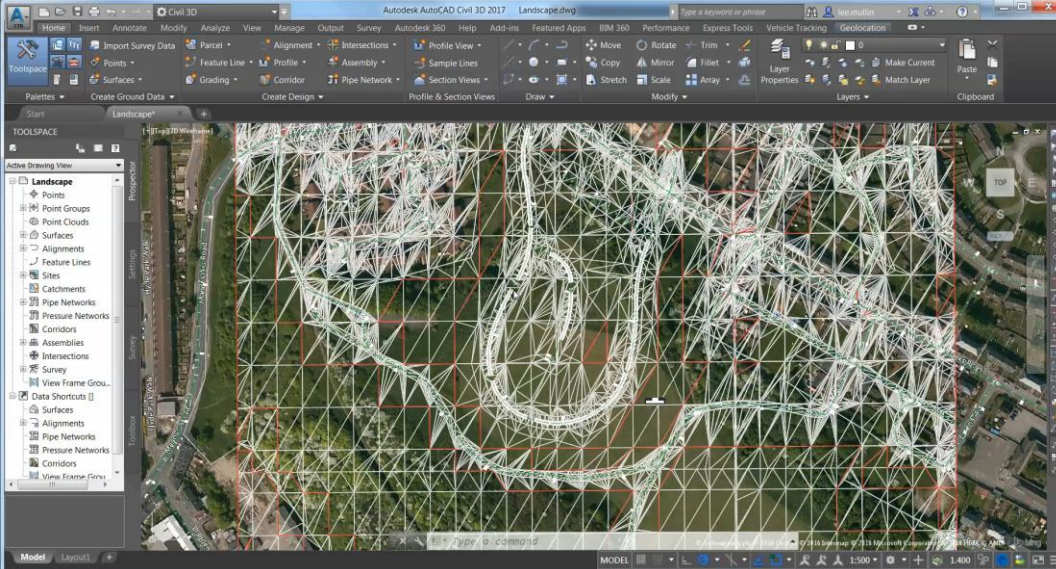


# Base models

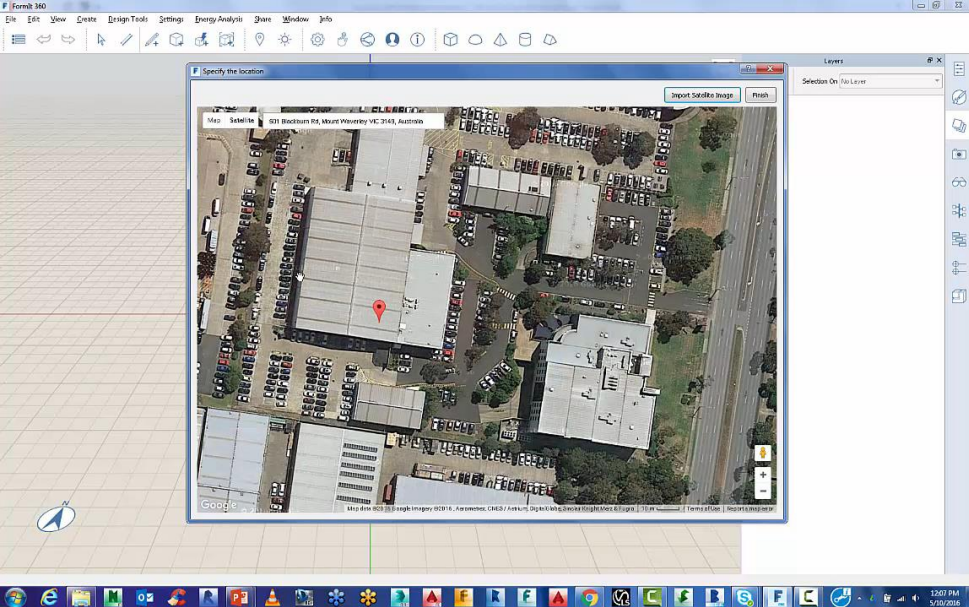
## Existing situation

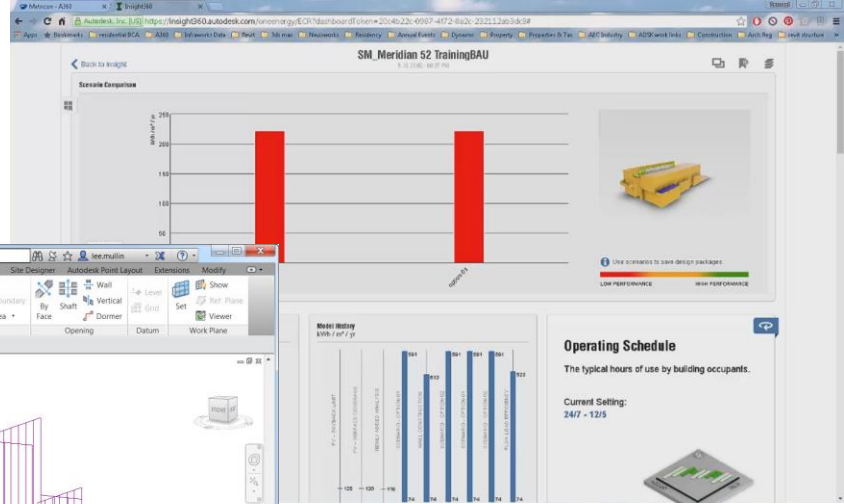
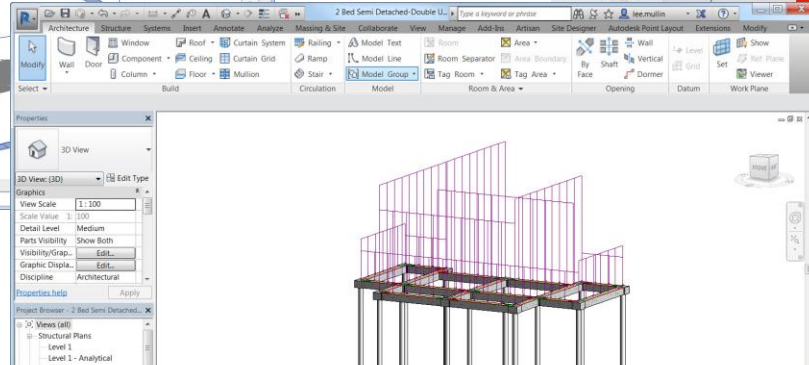
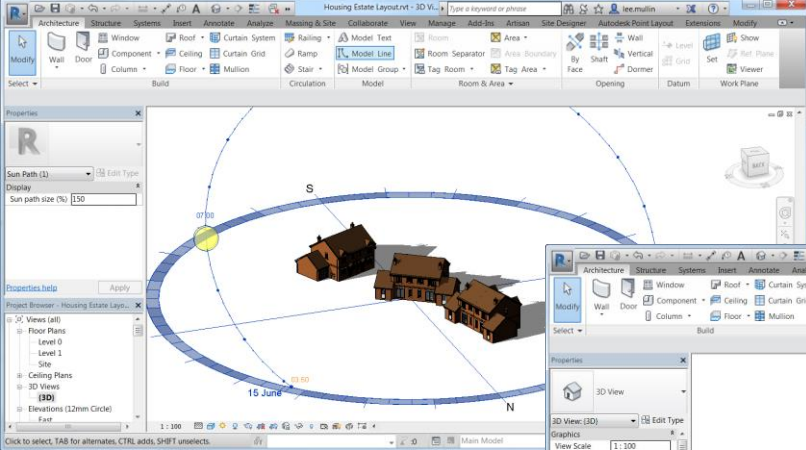












Properties

Schedule

Schedule: Room Schedule Edit Type

Identity Data

View Name Room Schedule

Dependency Independent

Phasing

Phase Existing

Other Fields Edit...

Properties help

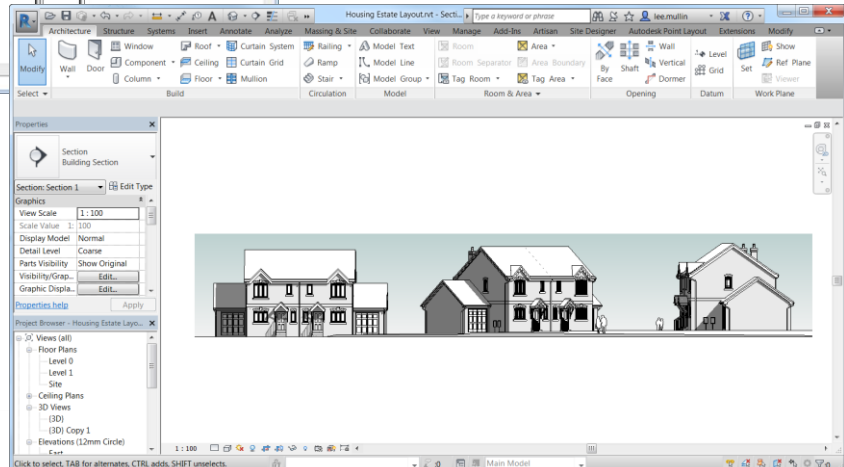
Project Browser - 2 Bed Semi Detached...

- Schedules/Quantities
  - Room Schedule
  - Room Style Schedule
- ED Sheets (all)
  - A001 - Unnamed
  - A002 - Rendered Views
- IF Families
- IF Rooms
- IF Revit Links

Ready

Main Model

Unit Number	Room Name	Area	Room Style	Wall Finish	Floor Finish	Ceiling Finish	Ceiling Color
SD20-A001	Ground	Garage	18 m²	Garage	Blockwork	Sealed Scribed	None
SD20-A001	Ground	Lounge	18 m²	Lounge	Wallpaper	Timber	Paint
SD20-A001	Ground	Kitchen	7 m²	Kitchen/Bathroom/Utility	Paint Ceramic Tiles	Ceramic Tile	Paint
SD20-A001	Ground	Hall	6 m²	Circulation	High Durability Paint	Carpet	Paint
SD20-A001	First	Bedroom 1	7 m²	Kitchen/Bathroom/Utility	Paint Ceramic Tiles	Ceramic Tile	Paint
SD20-A001	First	Bedroom 2	7 m²	Kitchen/Bathroom/Utility	Paint Ceramic Tiles	Ceramic Tile	Paint
SD20-A001	First	Ensuite	3 m²	Bedroom	Carpet	Carpet	Paint
SD20-A001	First	Bedroom 1	12 m²	Kitchen/Bathroom/Utility	Paint Ceramic Tiles	Ceramic Tile	Paint
SD20-A001	First	Bedroom 2	12 m²	Kitchen/Bathroom/Utility	Paint Ceramic Tiles	Ceramic Tile	Paint
SD20-A001	First	Hall	6 m²	Circulation	High Durability Paint	Carpet	Paint
SD20-A002	Ground	Lounge	18 m²	Lounge	Wallpaper	Timber	Paint
SD20-A002	Ground	Kitchen	7 m²	Kitchen/Bathroom/Utility	Paint Ceramic Tiles	Ceramic Tile	Paint
SD20-A002	Ground	Hall	6 m²	Circulation	High Durability Paint	Carpet	Paint
SD20-A002	Ground	Garage	18 m²	Garage	Blockwork	Sealed Scribed	None
SD20-A002	First	Bedroom 1	7 m²	Kitchen/Bathroom/Utility	Paint Ceramic Tiles	Ceramic Tile	Paint
SD20-A002	First	Bedroom 2	7 m²	Kitchen/Bathroom/Utility	Paint Ceramic Tiles	Ceramic Tile	Paint
SD20-A002	First	Ensuite	3 m²	Bedroom	Carpet	Carpet	Paint
SD20-A002	First	Bedroom 1	12 m²	Kitchen/Bathroom/Utility	Paint Ceramic Tiles	Ceramic Tile	Paint
SD20-A002	First	Bedroom 2	12 m²	Kitchen/Bathroom/Utility	Paint Ceramic Tiles	Ceramic Tile	Paint
SD20-A002	First	Hall	6 m²	Circulation	High Durability Paint	Carpet	Paint
Grand total:			20				



# AutoCAD vs. Revit Documentation



- Set up time for project using Revit is on par with AutoCAD.
- The benchmarking study shows an overall savings in time of approximately **50% for the entire workflow**
- Even more time saving are made with revision to the master document
  - AutoCAD = 29 hours
  - Revit = 7 hours



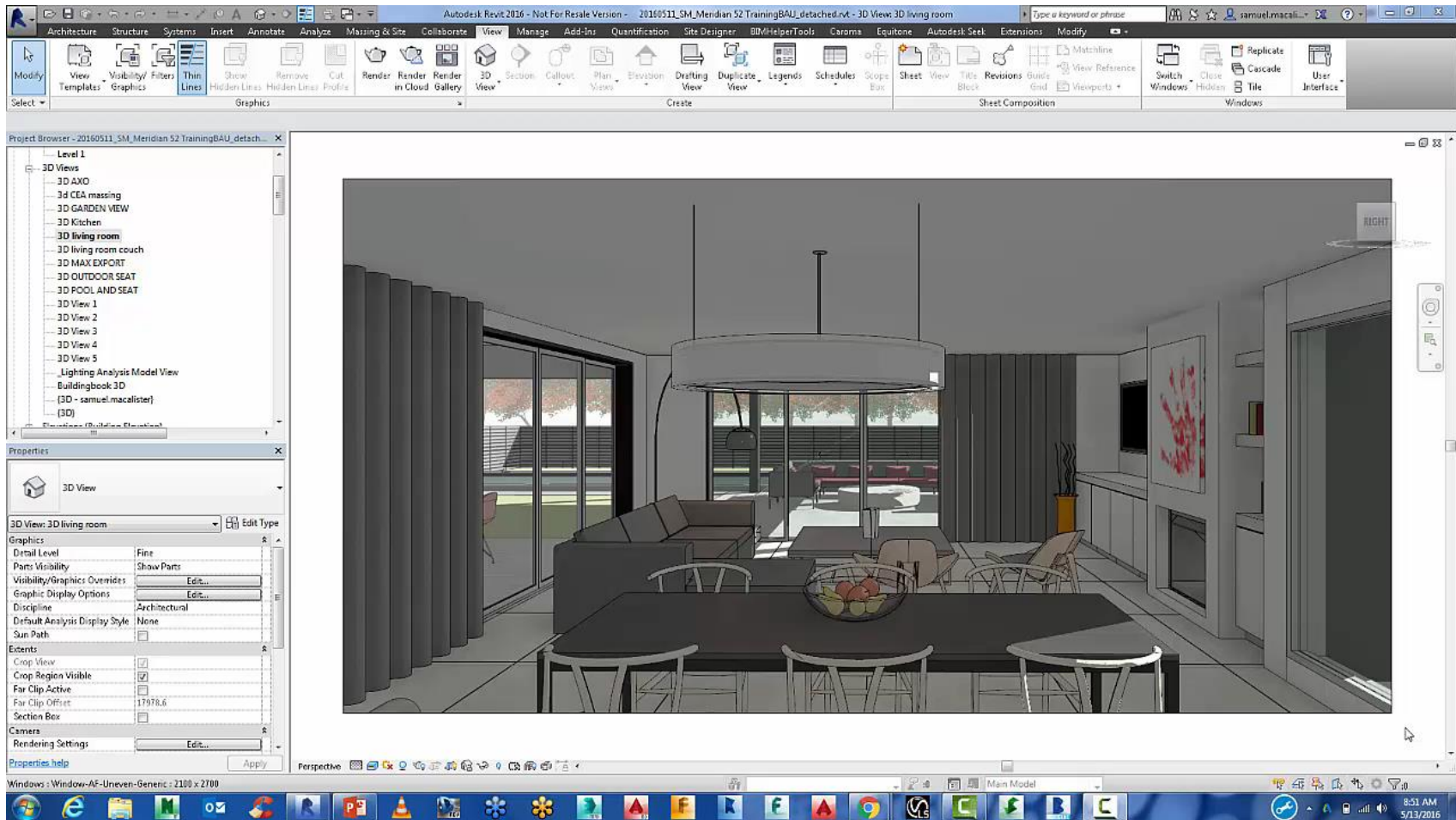


Image courtesy of Mactaggart and Mickel Homes

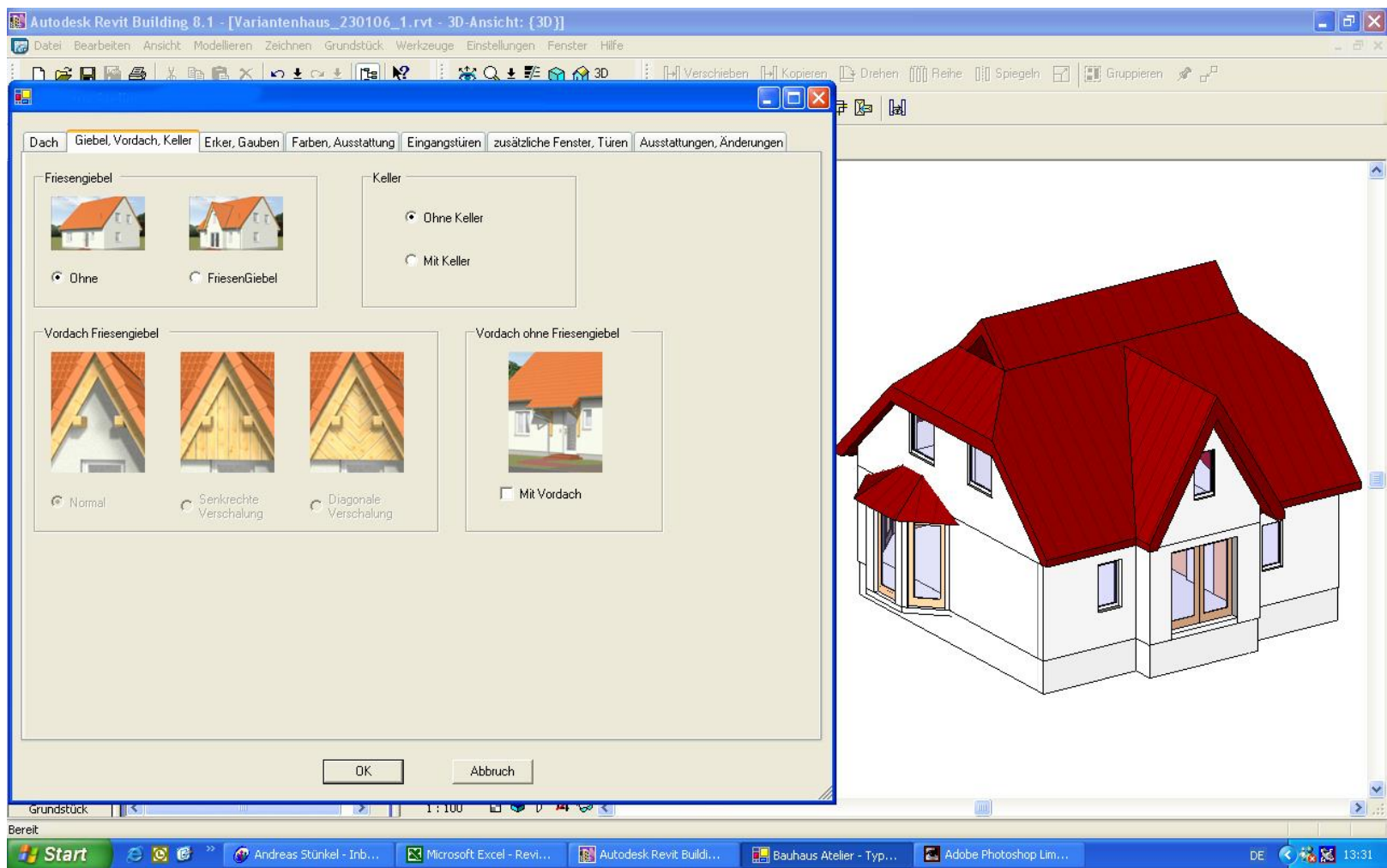


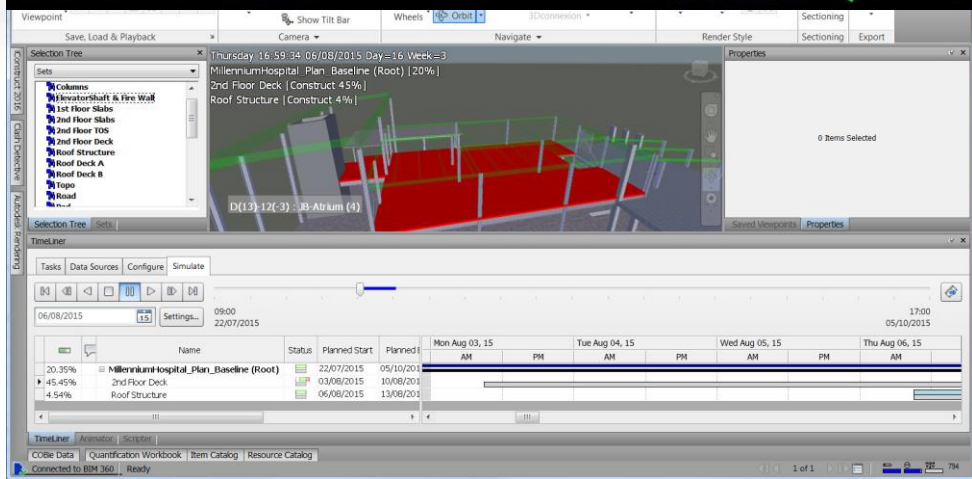
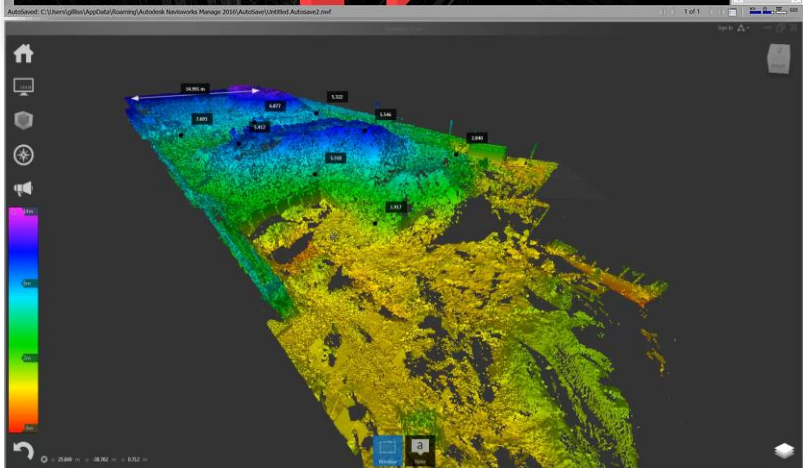
Image courtesy of Mactaggart and Mickel Homes and Stewart Milne Group

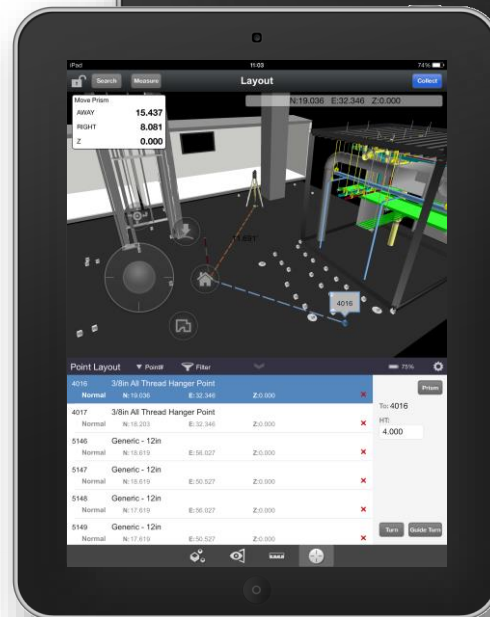
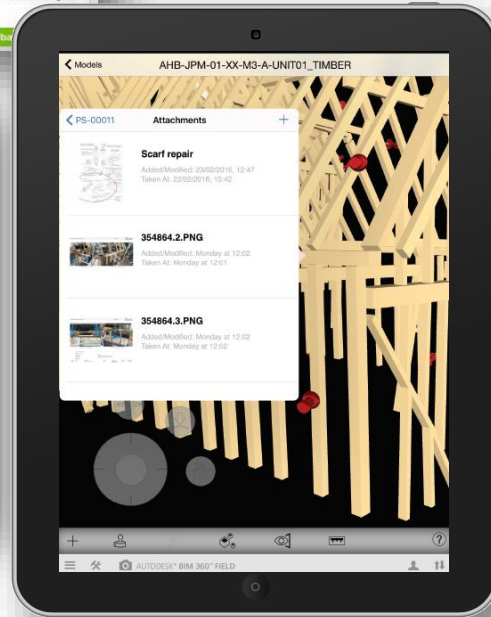
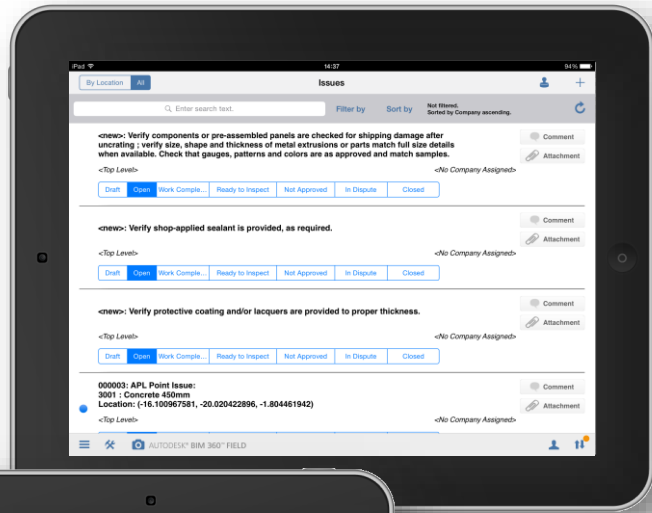
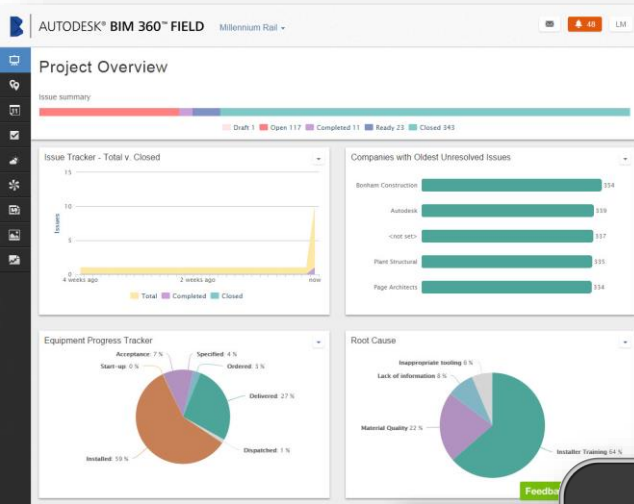






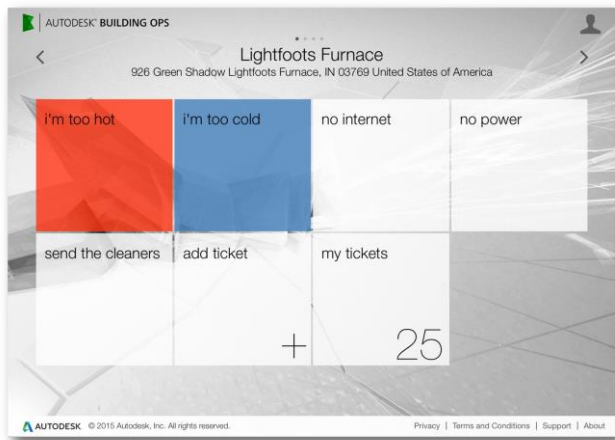
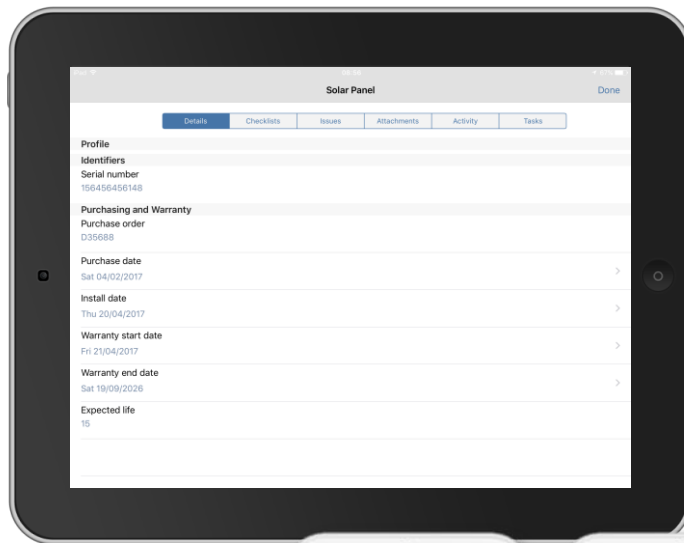
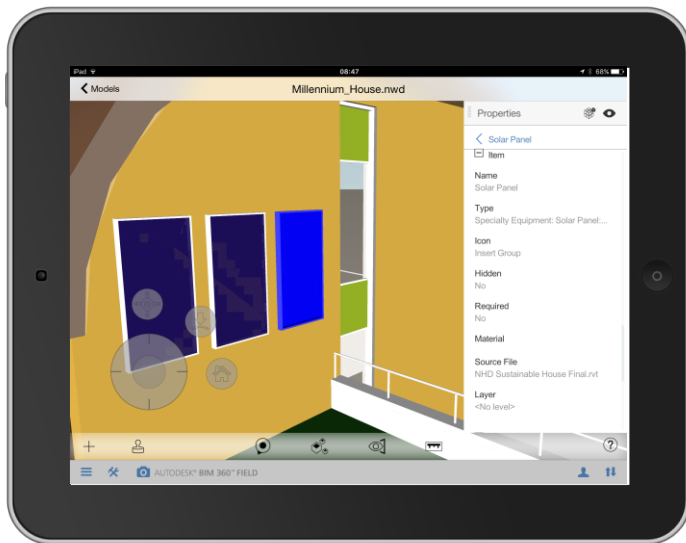




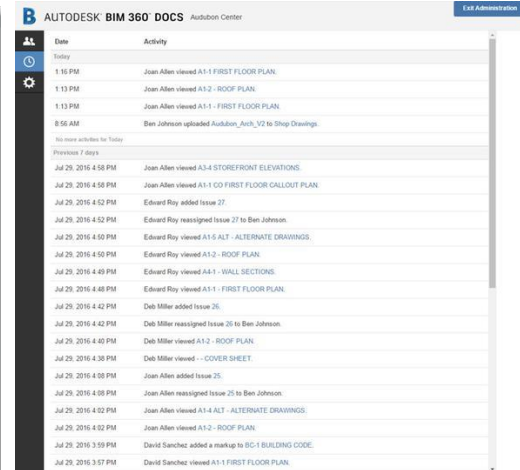
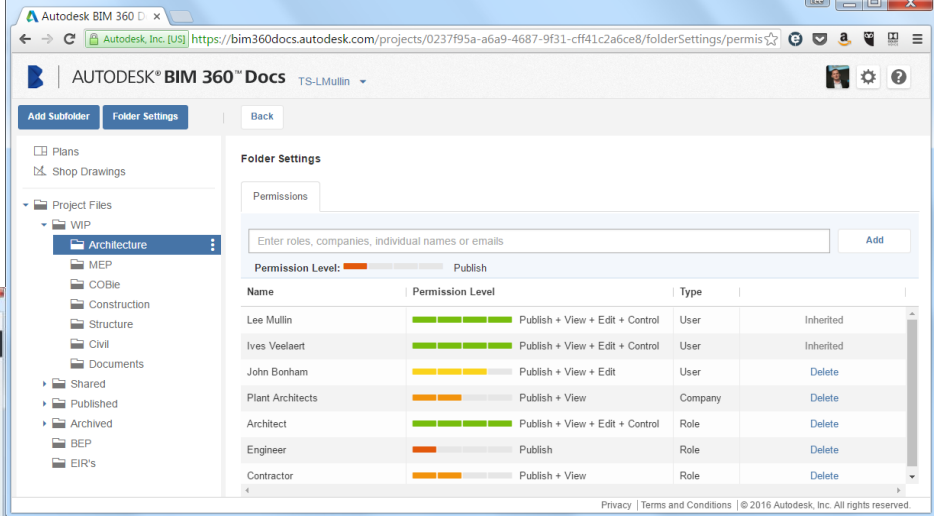
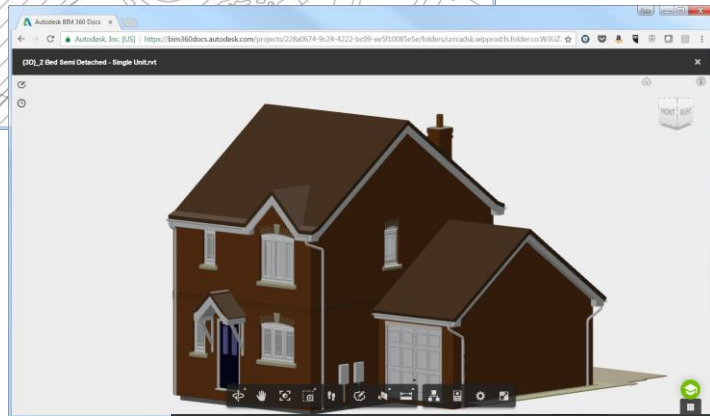




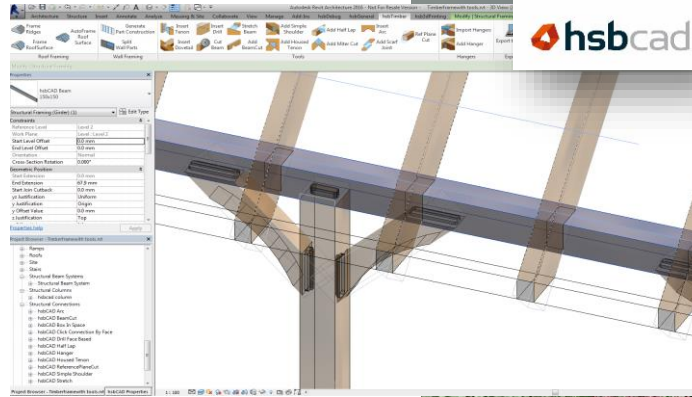








# OPEN ECOSYSTEM



# PLANNING



Land Acquisition



Site Design and Optimisation



Planning Permissions

# DESIGN



Concept Unit Design



Analysis



Detailed Unit Design & customisations



Documentation

# SALES & MARKETING



Pricing



Customer Choices



Customer Sales Experience



Handover



Operations & Maintenance



Customer Service

# OPERATIONS



Schedule, Progress and Cost



Pre-fabrication and Assembly



Layout, Quality and Verification



Field Execution & Construction Admin

# BUILD

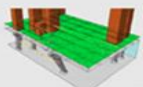
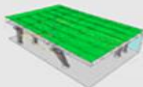
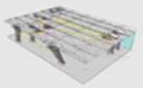
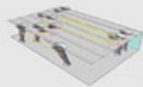
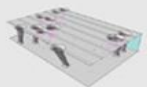




# EFFICIENCY THROUGH SEGMENTATION

## Single Experiment with Three Objectives

1. Objective  
Maximize circulation path (model will tend to get as large as possible)
2. Objective  
Maximize retail surface area over column surface area (model will tend to shrink)
3. Objective  
Minimize total structural members (model is predicted to shrink and flatten out)







**AUTODESK®**

Make anything™