

Richard Blyth

Royal Town Planning Institute

Sponsored by





RTPI

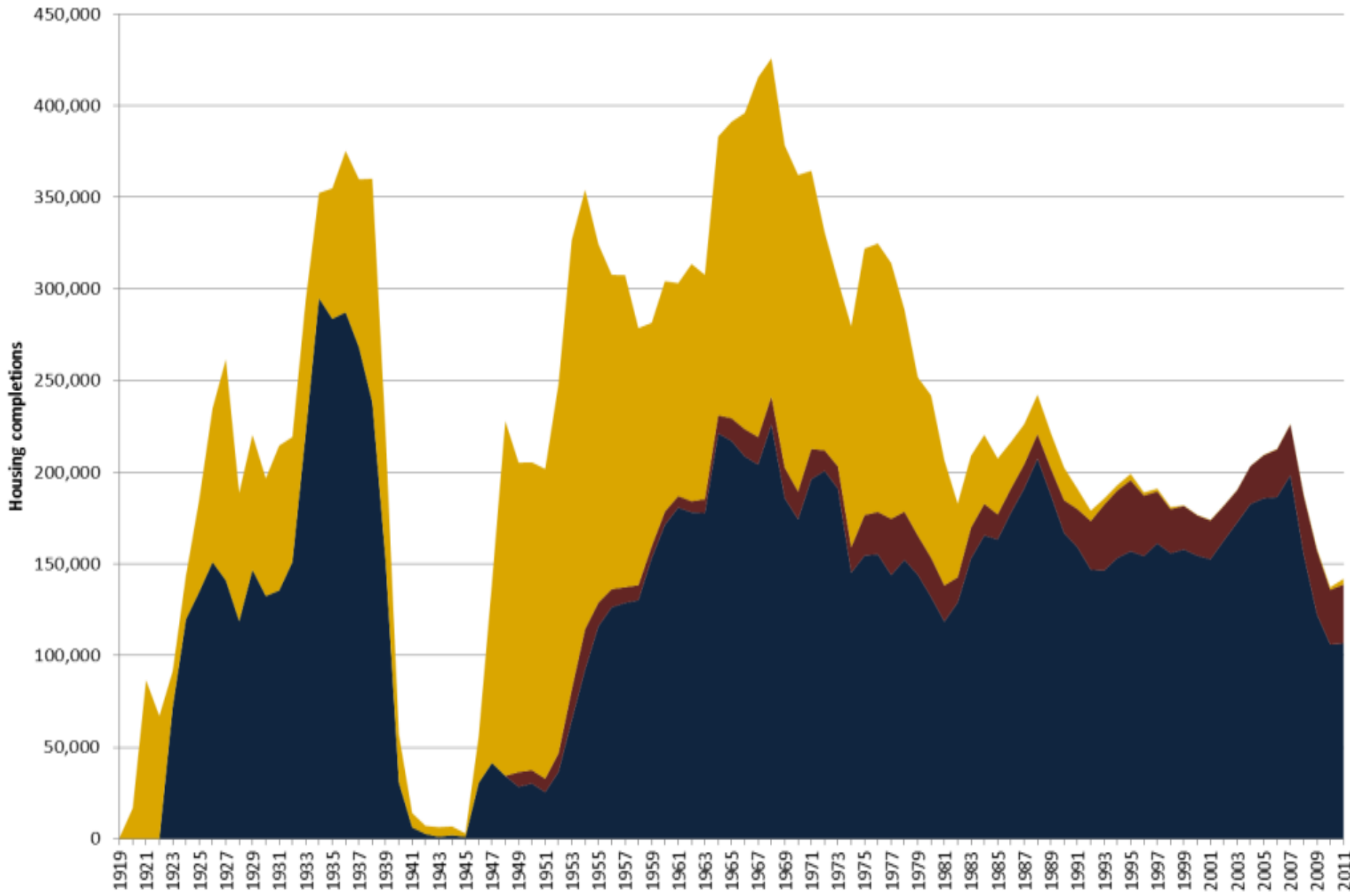
mediation of space · making of place

Delivering Large-Scale Housing

**HBF Planning Conference, Birmingham
September 2013**

**Richard Blyth
Head of Policy
RTPI**

■ Private Enterprise ■ Housing Associations ■ Local Authorities





RTPI

mediation of space · making of place

Why (1)?

Public opinion

LABOUR'S GREENBELT GRAB

The Council proposes to expand the size of the City by 25%. 22,000 additional homes would be built with most likely to be occupied by international migrants. There will be several consequences including:

- The draft Green Belt boundaries for the city will be torn up
- Around 1100 new homes will be built each year mostly on green field sites like Acomb Moor off Foxwood Lane.
- Existing house values could fall by at least 10% as cheap land swamps the market
- Traffic levels are estimated to grow by 2.5% each year. Lendal bridge will be closed to private cars.

More background information can be found on the web at
<http://tinyurl.com/York-Plan-June-13>



RTPI

mediation of space · making of place

Why (2) ?

Land





RTPI

mediation of space · making of place

Why (3)? Infrastructure





RTPI

mediation of space · making of place

Why (4)?

Finance



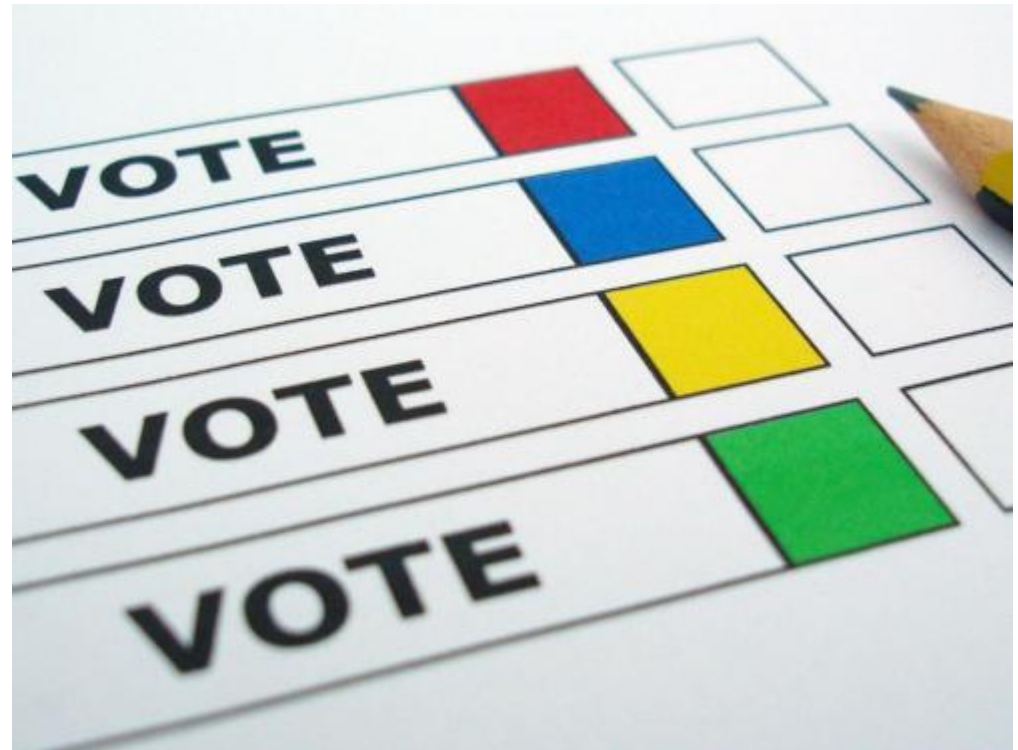


RTPI

mediation of space · making of place

Why (5)?

Leadership



Home / Shape Auckland housing simulator

SHAPE AUCKLAND HOUSING SIMULATOR

Auckland is projected to grow by a million people over the next 20 years. Planned properly, that growth can help make Auckland the world's most livable city. Have a go at choosing where you think the approximately 400,000 homes needed should go. We encourage you to share your solution with friends using the links below.

Please note that all figures and results are indicative only.



HOUSES CREATED
399,800
ADDITIONAL HOMES NEEDED
200

WHERE THE NEW HOMES WILL BE

CITY CENTRE
1%

METROPOLITAN CENTRES
6%

TOWN CENTRES
2.6%

LOCAL CENTRES
6.8%

COURTYARDS
45.2%

COUNTRYSIDE
38.5%



WHAT THE DRAFT AUCKLAND UNITARY PLAN ENABLES →

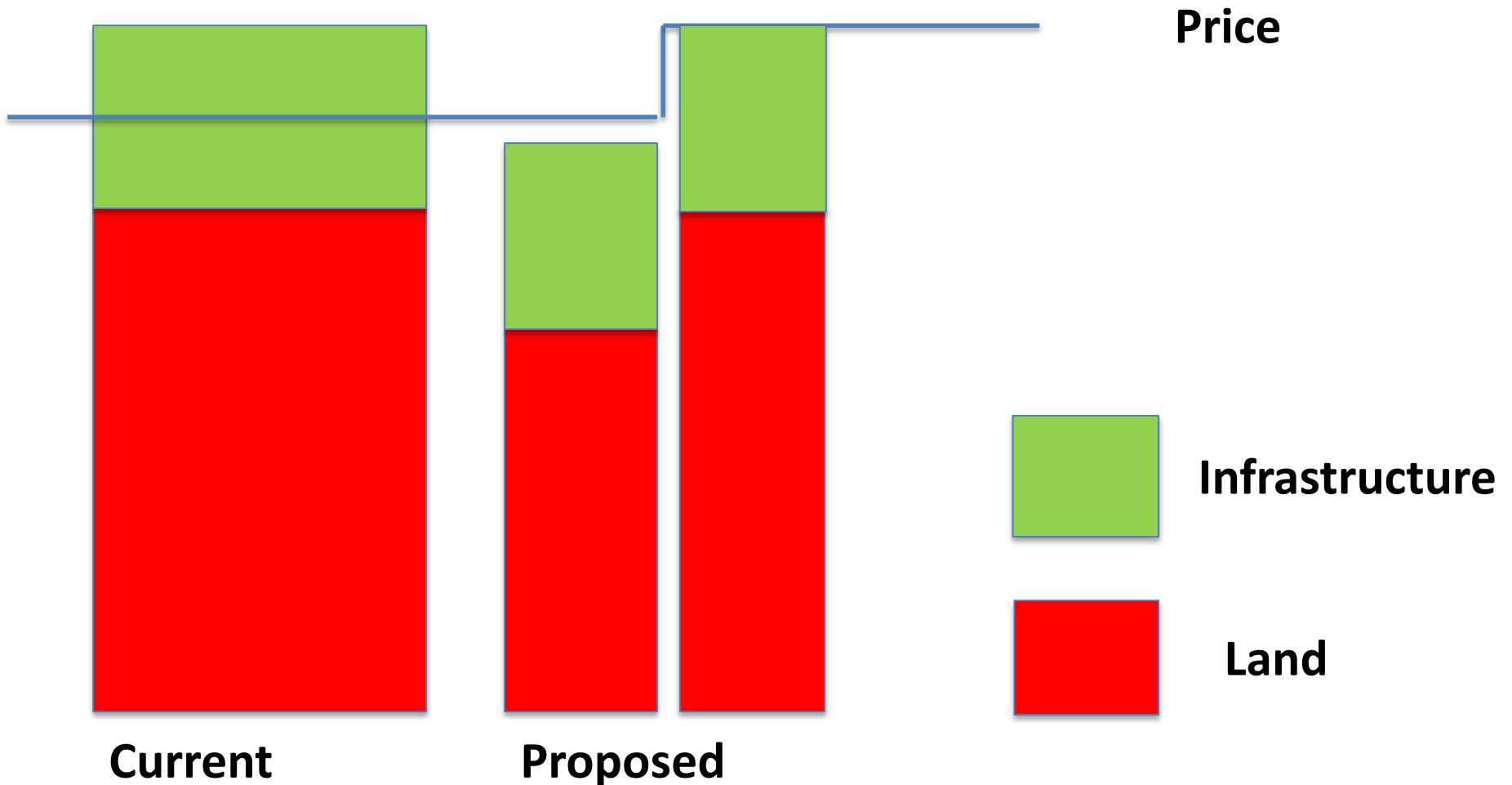
Solutions (1)
Engagement



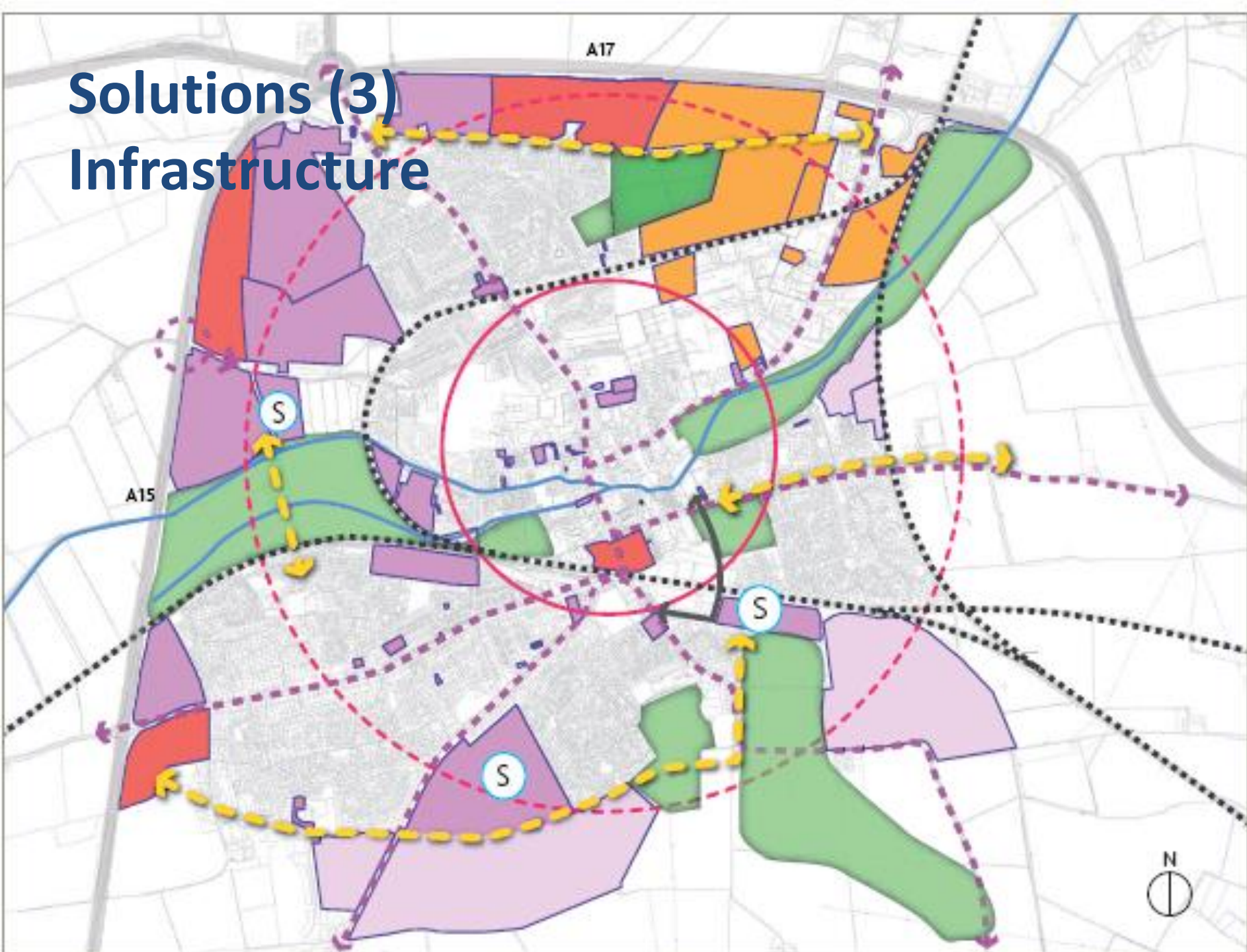
RTPI

mediation of space · making of place

Solutions (2) Land



Solutions (3) Infrastructure





RTPI

mediation of space · making of place

Solutions (4)

Finance

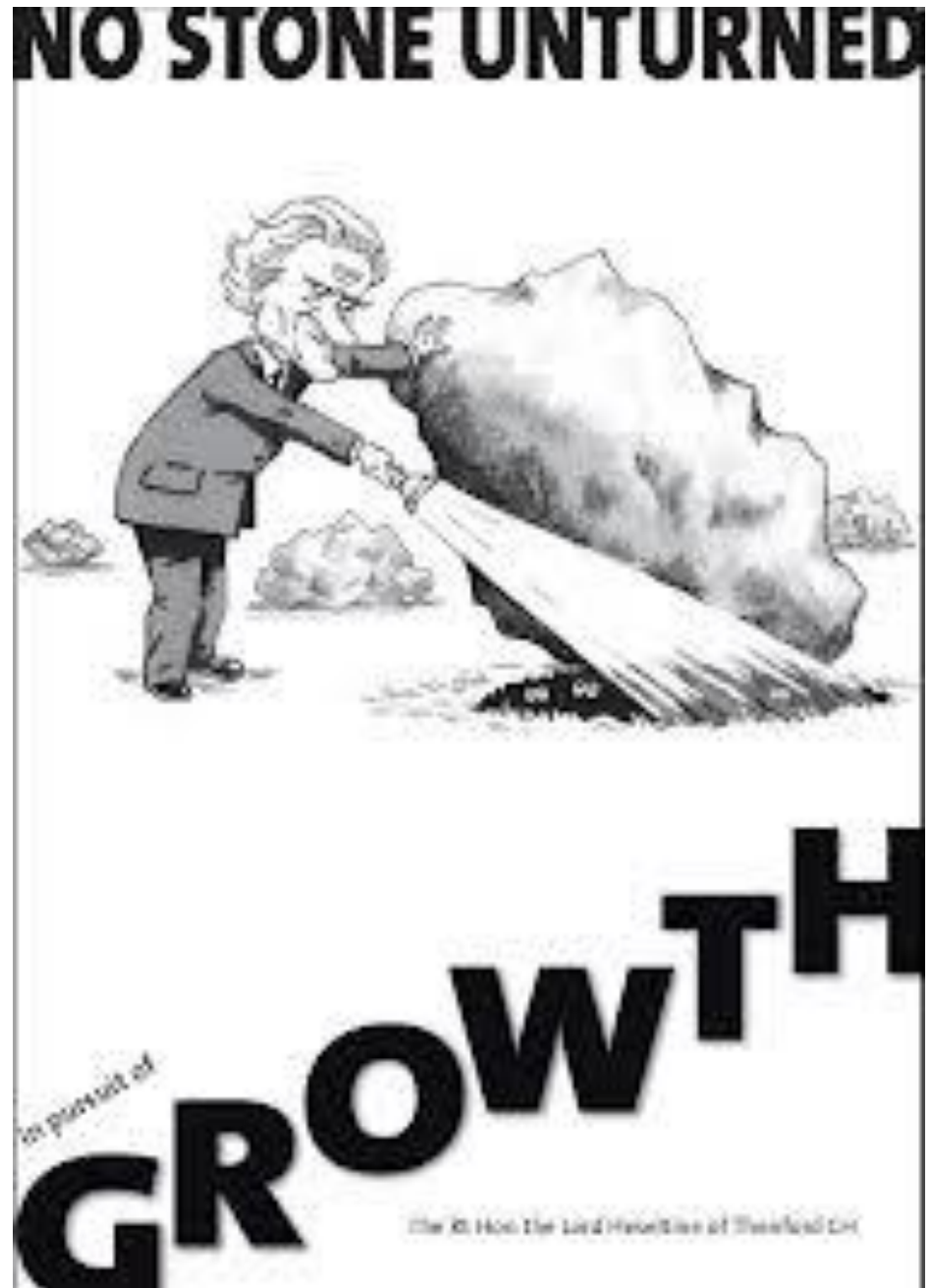




RTPI

mediation of space · making of place

Solutions (5) Leadership



RTPI Housing Paper

Find on home page of
www.rtpi.org.uk

Delivering Large Scale Housing:

Unlocking Schemes and Sites to
Help Meet the UK's Housing Needs

September 2013





RTPI

mediation of space · making of place

Richard.Blyth@rtpi.org.uk

@richardblyth7

@rtpiplanners