



RTPI

mediation of space · making of place

Royal Town Planning Institute

Trudi Elliott
Chief Executive



RTPI

mediation of space · making of place

The Royal Town Planning Institute

- Largest planning institute in Europe
- Advances the art and science of planning
- Represents and supports planners





RTPI

mediation of space · making of place

RTPI work on housing

- Campaigning for resources in the housing sector, including planners
- Focusing on what needs to happen to ensure delivery
- Advocating proper planning, which takes economic, social and environmental impacts into account
- Planning should be seen as a solution not a problem

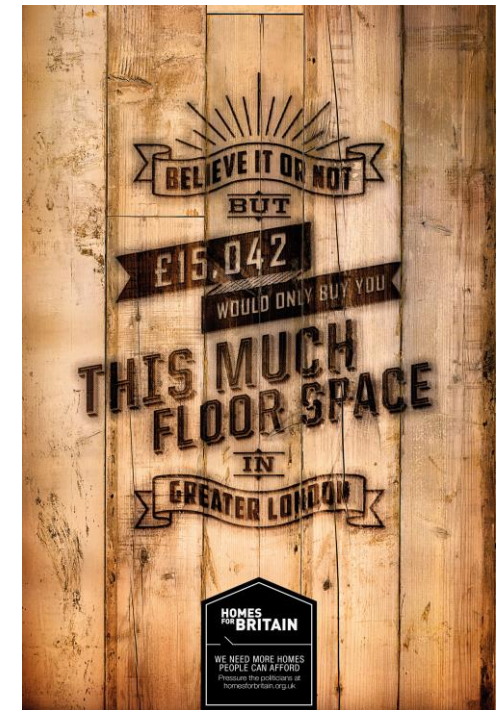


RTPI

mediation of space · making of place

Homes for Britain

- Successful campaign to raise profile of housing in the run-up to 2015 General Election





RTPI

mediation of space · making of place

Current policy engagement

- Response to the Queens Speech and Productivity Plan
- Response to the 2015 Spending Review consultation
- Engaging with Government on housing and 2008 NSIP regime
- Supporting Local Plan preparation and LPA discussions on resources for planning
- Great North Plan - call for evidence
- Planning for the next Mayor of London
- Work with the Rural Coalition
- Zero carbon homes policy
- Responding to consultations



RTPI

mediation of space · making of place

Location of Development

- Major research project delivered by Bilfinger GVA,
- Maps the location and scale of new housing in fifteen of the UK's fastest growing city-regions
- Analyse growth patterns and implications for sustainability
- Results to be published early 2016



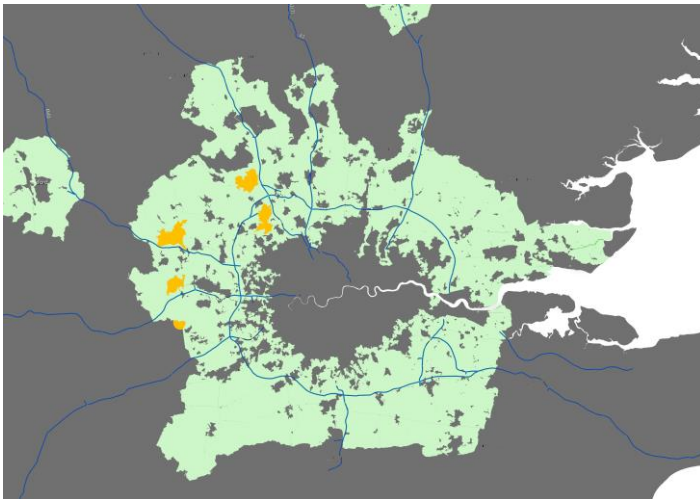


RTPI

mediation of space · making of place

Green Belt

- Public briefing on the history and role of green belts
- Green belt debate at Oxford Brookes
- Research on commuting patterns in the London green belt
- Engaging with members on subject of housing in the green belt





RTPI

mediation of space · making of place

Housing delivery and resources

- Arup commissioned to examine whether limited resourcing is undermining economic recovery across the North West region
 - Is limited resourcing holding back delivery of homes, employment and infrastructure?
 - Survey of every LPA to establish trends and pressures
- CIC Construction Summit on skills and expertise gap



RTPI

mediation of space · making of place

Planning for growth: the role of LEPs

- First comprehensive analysis of all LEP roles
- Considerable potential for LEPs to work across policy areas and contribute to devolution, however often held back by unclear status, unfamiliarity with town planning and lack of personnel
- Lack of suitable housing often identified by LEPs as barrier to growth, but SEPs tend to steer away from informing housing need
- Can do more to integrate LEP economic development plans and local housing strategies





RTPI

mediation of space · making of place

Economic value of planning

- New research from the RTPI which demonstrated a link between regeneration and life prospects on the Gorbals housing estate in Glasgow
- RTPI funded research projects:
 - Planning for Growth: International evidence from China
 - Putting a price on planning? A cross-national investigation into the behavioural economics of managed development
- Sequel to the 'Worldwide Value of Planning' report





RTPI

mediation of space · making of place

Planning and the technology sector

- Looks at role of planning in enabling the tech/advanced manufacturing sectors, and ensuring that their growth benefits city as a whole
- Planning for associated housing growth to secure wider benefits

Place, poverty and inequality

- Looks at the outcomes of areas-based initiatives for alleviating poverty and inequality
- Role of housing in reinforcing or breaking patterns of inequality



RTPI

mediation of space · making of place

Research in the Regions

- Local Enterprise Partnerships: How successful have they been in securing development? (RTPI South West region)
- Planning and growth management in the South East (RTPI South East region)
- Localism in local planning authorities (RTPI West and Midlands region and Planning Aid England)
- Separate research programmes in Scotland, Wales and Northern Ireland





RTPI

mediation of space · making of place

Fair Deal on Land Coalition

- Asks for Government to consider land value uplift as additional funding source for housing/infrastructure
- Working with Shared Assets, Crisis, Shelter, Peabody, NHF, Adam Smith Institute, Res Publica, CIH, CIHT, TCPA
- Part of broader RTPI discussion on capturing land value uplift





RTPI

mediation of space · making of place

Local Plan preparation

- Responding to announcements on planning reform
- Supporting local authorities
- RTPI Awards for Planning Excellence: Excellence in Plan Making





RTPI

mediation of space · making of place

Learning and Practice needs

- **Delivering housing to meet national needs**
- Understanding land as a resource (demand for energy)
- Understanding and practicing in a market economy
- Communication, mediation and negotiation skills
- Management and business skills
- Health and inclusive planning
- Effective decision making
- Ethics





RTPI

mediation of space · making of place

RTPI bursaries and apprenticeships

- 44 bursaries of £1,000 being awarded in 2015 by 23 universities to students on RTPI accredited Masters
- Apprenticeship
 - A new pathway into the profession, designed to widen the talent pool
 - Level 3 Technical Support Apprenticeship framework, leading to NVQ & Diplomas
 - Scheme is being run this Autumn in Chichester and Havering and other colleges are coming on stream
 - To expanded in 2016 if there is employer support



RTPI

mediation of space · making of place



Planning Aid

- Free, independent, professional planning advice to those without the means to pay professional fees, helping local communities to influence and contribute to planning strategy, policy and decision making
- Directly supporting over 260 neighbourhood plan teams across the country, now continuing to offer planning advice via Planning Aid Direct service
- Neighbourhood plans can be a key vehicle for delivering new housing in the areas they cover
- Over 1,300 communities are now actively engaged in preparing these plans



RTPI

mediation of space · making of place

RTPI International

- Promoting the UN Sustainable Development Goals
- Goal 11: Sustainable Cities and Communities





RTPI

mediation of space · making of place

Some of our upcoming events on housing

- [Building communities: delivering growth and regeneration](#) (30 Sept, London)
Speakers: Michael Mulhern, David Rudlin, Peter Frankum and more...
- [Planning issues for the housing agenda](#) (7 Oct, London)
Speakers: Steve Fidgett, Nicky Linihan, Marc Vlessing and more...
- [RTPI Scotland Annual Conference](#) (7 Oct, Dundee)
Speakers: Alex Neil MSP, Allan Watt, Paul White and more...
- [2015 Young Planners Annual Conference](#) (9-10 October, Southampton)
Speakers: Andrew Whitaker, Janice Morphet, Alethea Evans and more...
- [NLP Annual Lecture](#) (26 November, London)
Speakers: Lord Kerlake
- [Planning to deliver exception places](#) (28 November, Birmingham)
Speakers: Richard Cowell, Paul Barnard and more...



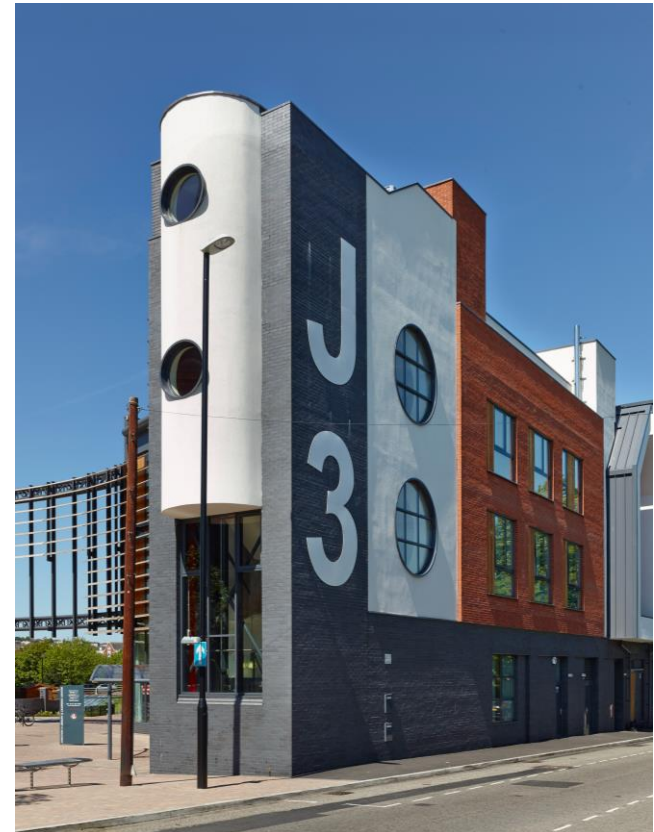
RTPI

mediation of space · making of place

RTPI Networks

- **Planning for Housing (with CIT)**
- Transport Planning (with TPS)
- Urban Design
- Regeneration
- Politicians In Planning (PIPA)
- Independent Consultations Network
- Planning Enforcement (NAPE)
- International Development

Affiliate membership route open to non-planners





RTPI

mediation of space · making of place

Awards

- England's Great Places
 - Celebrates the role of planning in protecting and shaping places across the country
 - Public vote opens end of September
- 2016 Awards for Planning Excellence
 - Entries opening soon!





RTPI

mediation of space · making of place

Policy and Research Papers

- Delivering Large-Scale Housing
- Fostering Growth
- Strategic Planning
- Transport Infrastructure Investment
- Making Better Decisions for Places
- Promoting Healthy Cities
- Future-Proofing Society
- Thinking Spatially
- Creating Economically Successful Places



All [policy](#) and [research](#) papers available on our website



RTPI

mediation of space · making of place

Thank you

trudi.elliott@rtpi.org.uk

www.rtpi.org.uk